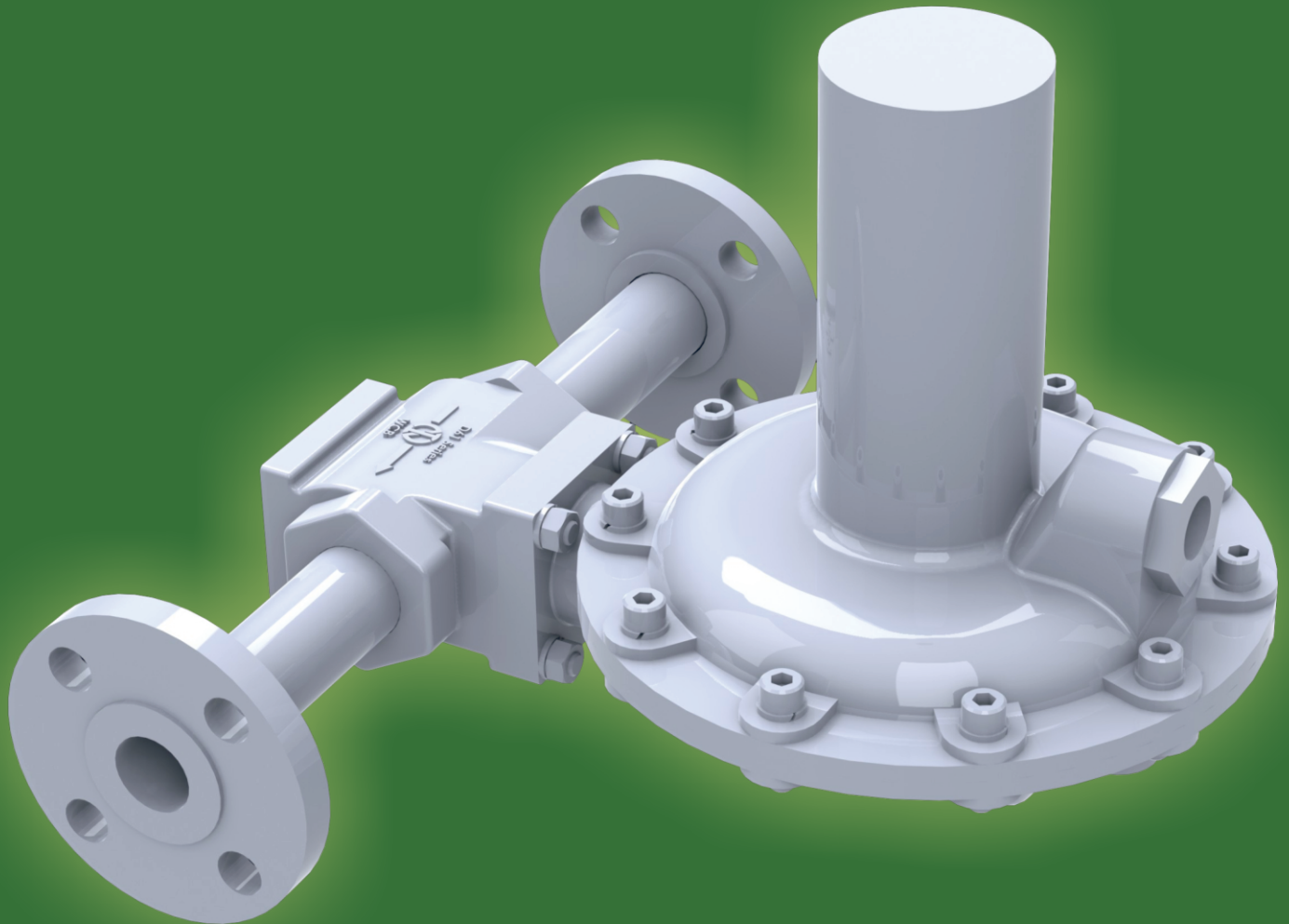


GAS PRESSURE REGULATOR

SERIES D61



INTRODUCTION

The **SERIES D61** is direct acting (spring loaded) regulators for cost-effective and very low pressure regulation applications. These regulators are best suited for industrial, commercial gas burner applications & combustion systems.

The compact construction is ideally suitable for tank blanketing application. These regulators are designed to maintain very low pressure with high inlet pressure upto 11 Barg (159.4 Psig).

GAS PRESSURE REGULATOR

SERIES D61

PRODUCT VARIATIONS

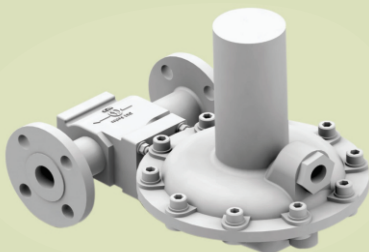
SERIES D61R

SERIES D61R:- Low pressure regulator version with variety of set ranges. Available in 1", 1½" and 2" sizes with integral Flanged end connection.



SERIES D61V & D61L

SERIES D61V & D61L:- Very low pressure regulator D61V and Low pressure regulator D61L version with variety of set ranges and flow capacities, available in 1" size.



KEY FEATURES

- **Glandless Construction:** Where positive zero gland leakage is required, the design scores over conventional solutions such as bellow seal etc., as the gland itself is eliminated and hence there won't be gland leakage. Glandless construction eliminates hysteresis, resulting in improvement of sensitivity and repeatability of the valve.
- **Special diaphragm holding arrangement:** Prevents diaphragm and internal parts damage against passing of full inlet pressure towards downstream.
- **Blanketing application:** Suitable for low pressure tank blanketing with inert gas for solvent storage.
- **Tamper Resistant:** An adjusting screw with protective cap is standard to discourage tampering with pressure setting.
- **Orientation in 360° direction:** Regulators can be mounted in any direction and can be easily repositioned while in-line.
- **Easy maintenance:** Regulator internals can be inspected without removing body from line.
- **Tight Shut Off Capability:** Provides excellent tight shut off capability over long working life.

TECHNICAL SPECIFICATIONS

BODY SIZE & CONNECTIONS

Version D61R

- **Flanged End:**
1", 1½" and 2" ANSI 150#, ANSI 300#

Version D61V & D61L

- **Screwed End:** 1"
- **Flanged End:**
1" ANSI 150#, ANSI 300#
- **SPRING CASING & DIAPHRAGM CASING PR. MAX:**
11 Kg/cm²g

MATERIAL OF CONSTRUCTION

- **Body & Diaphragm Casing *:** A216 Gr. WCB (Standard), A351 CF8, A351 CF8M
 - **Spring Housing*:** Steel, A216 Gr. WCB, A351 CF8, Aluminium Alloy LM 24
 - **Internal Trim Parts*:** SS316L (Standard)
- * (NACE & other special material available on request)
- **Disc & Diaphragm :** Nitrile (Standard), Neoprene, EPDM, Silicone, Fluoropolymer, PTFE
 - **Temperature Capabilities :** - 45° C to 200° C with different elastomeric parts.
 - **Set Range and Flow Capacities**
 - For D61R - Available from 15 mBarg to 800 mBarg
 - For D61V - Available from 2.5 mBarg to 37 mBarg
 - For D61L - Available from 6 mBarg to 480 mBarg
 - **Pressure Setting Adjustment :** Can be adjusted across a spring range by turning the adjusting screw
 - **Pressure Registration :** Internal (through Pitot tube)