

Ball Valves Butterfly Valves Valve Automation



Flow control solutions for process industry



Delivering Value..... always!

DelVal Flow Controls proudly presents a wide range of world-class industrial process valves and valve automation products produced with one simple goal in mind – customer benefit! We believe that all our actions, from concept to performance of product, must deliver uncompromising value to customer.

Our passion to deliver a product with highest “PQ” Performance Quotient is the driver of all that we do at DelVal Flow Controls. Our plant near Pune, India has all resources required to design, develop and supply process control valves and valve automation products to any demanding application world-wide. Unique features and benefits are built into all our products that guarantee highly dependable performance consistently.

Our Mission, “We will provide our customers with superior performance flow control products that are delivered by efficient people and processes”

Our Vision, “We will build flow control products that will be installed in all plants world-wide as a “preferred brand”

DelVal Ball Valves

- Integral top flange design provides direct mounting of actuator or gear and easy access to the adjustable packing gland, even with the actuator or gear mounted.
Benefit: Eliminates need for bracket and coupling. Extends packing life in severe applications and reduces down time.
- Live loaded, double “V” stem packing and Viton stem “O” ring
Benefit: Provides dependable stem sealing under all critical conditions.

DelVal High Performance Double and Triple Offset Butterfly Valves

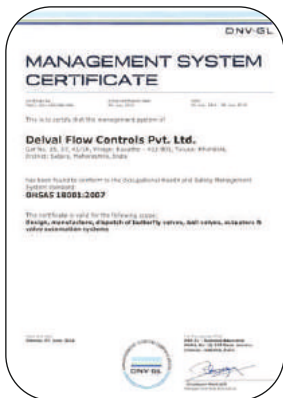
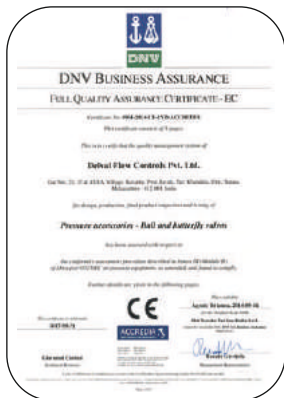
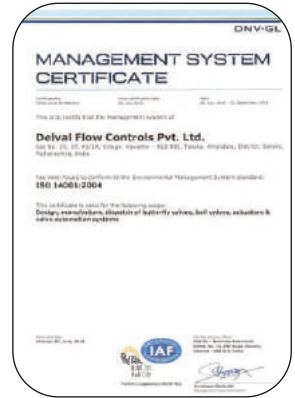
- Disc located and held by a one-piece, high strength alloy steel stem with precision taper pins.
Benefit: Robust design, ensures bi-directional leak tightness at rated pressure, with low operating torque.
- Live loaded, multiple “V” stem packing with adjustable gland
Benefit: Dependable fugitive emission stem sealing in critical applications as standard

DelTorq Pneumatic Actuators & Valve Automation Systems

- Two external travel stops permit adjustments of shaft rotation to +/- 5 degrees.
Benefit: Provides flexibility for setting of valve closure elements and increase seat life.
- Modular, pre-loaded spring cartridges to allow wide spring torque outputs
Benefit: Flexibility for fail close/open applications and safe disassembly of end caps during maintenance.
- Direct mounting of DelVal Valves with DelTorq Actuators
Benefit: Eliminates expensive brackets and couplings and ensures hysteresis free operation.

DelVal Centric Disc Butterfly Valves with Rubber or PTFE seats

- One-piece stem with close tolerance double-D drive eliminates the need for dowelling or pinning disc and stem.
Benefit: Eliminates potential leak path, breakage of joint and reduced down time.
- Heavy-duty square-grooved seat design with molded O-ring seals to serve as flange gaskets and peroxide cured to yield the best elastic properties of the seat.
Benefit: Extended seat life in severe applications and reduced down time.



Ball Valves



Floating Ball
DelVal- 65, 66, 67 & 68 Full Bore
DelVal- 69, 70, 71 & 72 Reduced Bore
Floating Ball Valve, 2 Piece, Full / Reduced Bore
 15 - 300 mm / 1/2" - 12"
 LCB / WCB / CF8 / CF8M / DUPLEX SS
 CF8 / CF8M / DUPLEX SS
 PTFE / RTFE / PEEK / Devlon
 Flanged to ANSI B16.5
 SS 316 / SS 304 / 17-4-PH SS / DUPLEX SS
 Lever / Gear / Pneumatic / Electric Actuator
 (-)46 °C to (+)200 °C / (-)50 °F to (+)390 °F
 ASME Class 150, 300, 600, 900
 Fire Safe



Trunnion Mounted Ball
DelVal-7, 2 Piece Full Bore, Reduced Bore
DelVal-8, 3 Piece Full Bore, Reduced Bore
Trunnion mounted, Full / Reduced Bore
 50 - 600 mm / 2" - 24"
 LCB / WCB / CF8 / CF8M / DUPLEX SS
 CF8 / CF8M / DUPLEX SS
 RTFE/ Nylon / Viton / PEEK / Devlon
 Flanged to ANSI B16.5
 SS 316 / SS 304 / 17-4-PH SS / DUPLEX SS / SS 410
 Lever/ Gearbox/ Pneumatic/ Electric Actuator
 (-)46 °C to (+)200 °C / (-)50 °F to (+)390 °F
 ASME Class 150, 300, 600, 900, 1500
 Fire Safe



Floating Ball
DelVal-64,
Screwed/ Socket Weld End Connections
3 Piece Body, Full / Reduced Bore
 15 - 50 mm / 1/2" - 2"
 WCB / CF8 / CF8M/ A105 / F316 / F304
 CF8 / CF8M / DUPLEX SS
 PTFE / RTFE / ACETAL / PEEK
 BSP(F) / NPT / Socket Weld
 SS 316 / SS 304 / 17-4-PH SS / DUPLEX SS
 Lever/ Pneumatic/ Electric Actuator
 (-)46 °C to (+)200 °C / (-)50 °F to (+)390 °F
 ASME Class 400 (1000 WOG) /Class 800

Butterfly Valves



DelVal-40 & 42, Wafer Body
DelVal-41 & 43 Lug Body

PTFE / PFA Seated Centric Butterfly Valve
 50-600mm / 2" - 24"
 CI / DI / WCB / CF8 / CF8M
 CF8 / CF8M / PTFE, PFA Lined CB7CU-1(2"- 12")
 CF8 / CF8M / PTFE, PFA Lined SS304 (14"-24")
 PTFE / PFA with Elastomer back-up
 CF8M / CF8 / CB7CU-1(Integral with disc) 2"-12"
 SS316 / SS410 / 17-4-PH SS (14" - 24")
 Lever / Gear Box / Pneumatic / Electric Actuator
 (-)29°C to (+) 200°C / (-)20 °F to (+)390 °F
 PN10 / 150 PSI



DelVal 44 & 47 Wafer Body (2" - 48" / 2" - 24")
DelVal 45 & 48 Lug Body (2" - 24")
Del Val 46 & 49 Double Flanged Body (3" - 48" / 3" - 24")

Double Offset High Performance Butterfly Valve
 50-1200mm / 2" - 48"
 LCB / WCB / CF8 / CF8M / DUPLEX SS/AL BRZ
 CF8 / CF8M / DUPLEX SS / AL BRZ
 ULTRA / RTFE / PTFE / Fire Safe / Metal
 17-4-PH SS / SS410 / SS316 / XM19 / DUPLEX SS / MONEL
 Lever / Gear Box / Pneumatic / Electric Actuator
 (-)46°C to (+) 260°C / (-)50°F to (+) 500°F for Soft Seat/ Fire Safe
 (-)46°C to (+) 538°C / (-)50°F to (+) 1000°F for Metal Seat
 ASME Class 150 / 300



DelVal 4A/4D/4H Wafer Body (3" - 48" / 3" - 24")
DelVal - 4B/4E/4H Lug Body (3"-24")
DelVal 4C/4F/4J Double Flanged Body (3"-48"/3"-24")

Triple Offset High Performance Butterfly Valve
 80-1200mm / 3" - 48"
 LCB / WCB / CF8 / CF8M / DUPLEX SS /AL BRZ
 LCB / WCB / CF8 / CF8M / DUPLEX SS / AL BRZ
 Body Seat - 13% chrome / Stellite,
 Disc Seal - SS+ Graphite / SS+PTFE / Pure Metal
 17-4-PH SS / SS410 / XM19 / DUPLEX SS/ MONEL
 Gear Box / Pneumatic / Electric Actuator
 (-)46°C to (+) 200°C / (-)50°F to (+) 390°F for SS + PTFE
 (-)46°C to (+) 538°C / (-)50°F to (+) 1000°F for SS+ Graphite, Pure Metal
 ASME Class 150 / 300 / 600



DelVal - 50/51 Wafer Body (2" - 48")
DelVal - 52 Lug Body (2"-24")
DelVal - 53 'U' Shaped Wafer Body (26"- 48")

Resilient Seated Centric Butterfly Valve
 50-1200mm / 2" - 48"
 CI / DI / WCB / AL BRZ
 DI (Nylon / Aroxy coated) / CF8 / CF8M / DUPLEX SS / AL BRZ
 EPDM / NBR / Viton / Silicone
 SS410 / 17-4-PH SS / SS316
 Lever / Gear Box / Pneumatic / Electric Actuator
 (-)29°C to (+) 200°C / (-)20 °F to (+)390 °F
 PN10, PN16 / 150 PSI, 230 PSI



DelVal-55 Double Flanged Body

Resilient Seated Double Offset Butterfly Valve
 80-2200mm / 3" - 88"
 CI / DI / WCB / DUPLEX SS / Ebonite Lined CI, DI, WCB
 WCB / CF8 / CF8M / DUPLEX SS
 EPDM / NBR / Viton / Silicone
 SS410 / 17-4-PH SS / SS316
 Gear Box / Pneumatic / Electric Actuator
 (-)29°C to (+) 200°C / (-)20 °F to (+)390 °F
 PN10, PN16 / 150 PSI, 230 PSI



DelVal-5C Wafer Body
DelVal-5D Lug Body
Resilient Seated Butterfly Valves for Special Applications

50 - 600 mm / 2" - 24"
 CI / DI / WCB / CF8 / CF8M
 EPDM, NBR Lined CS/CF8/CF8M/SS316 High Polished/
 HALAR® coated
 EPDM / NBR / VITON / Silicone
 SS 410 / 17-4-PH SS / CF8 / CF8M / SS316
 Lever / Gearbox / Pneumatic / Electric Actuator
 (-)29°C to (+) 200°C / (-)20 °F to (+)390 °F
 PN10 / 150 PSI

Actuators

Design Type
Body
Seal
Torque
Temp. Supply
Features
Mounting

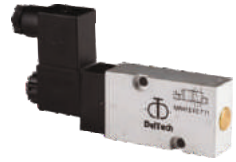
DelTorq-21 Pneumatic Rack & Pinion
 Dual Rack & Pinion
 Double Acting & Spring Return
 Extruded Aluminum, Hard Anodized
 Buna N / Silicone / Viton
 1900 Nm / 16815 Lbf-in max. at
 8 bar / 120 PSI air pressure
 (-)40 °C to 180 °C / (-)40 °F to 290 °F
 Air Pressure 3 bar / 40 PSI min.,
 8 bar / 120 PSI max.
 Stroke adjustment ± 5°, both ways
 ISO 5211 mounting / Namur interface

DelTorq-25 Pneumatic Scotch & Yoke
 Scotch & Yoke
 Double Acting & Spring Return
 Ductile Iron / CS / Stainless Steel
 Buna N
 30000 Nm / 265500 Lbf-in max.
 (-)20 °C to 150 °C / (-)4 °F to 240 °F
 Air Pressure 3 bar / 40 PSI min.,
 7 bar / 100 PSI max.
 Stroke adjustment ± 5°, both ways
 ISO 5211 mounting / Namur interface

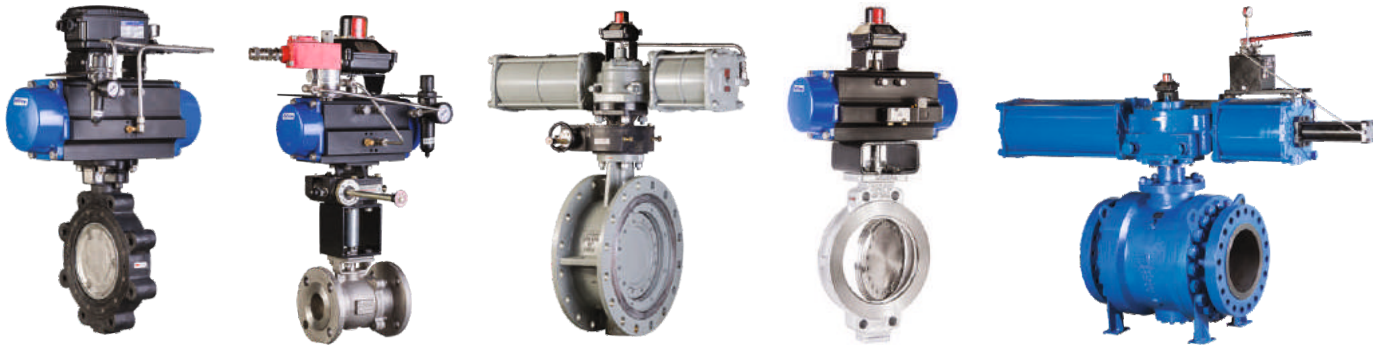


DeVal Valve Automation Accessories

- ❖ DelTech-80 , Solenoid Valve
- ❖ DelMonitor-83, Limit Switch Box
- ❖ Air Filter Regulator
- ❖ Manual Overrides
- ❖ Valve Positioners
- ❖ Air Lock Relay
- ❖ Air Reservoir Tank
- ❖ Fire Box
- ❖ Electrical Actuators



Automation



All statements, technical information and recommendations in the bulletin are for general use only. DeVal Flow Controls is not responsible for suitability or compatibility of these products in relation to system requirements. Consult DeVal Flow Controls distributors or factory for the specific requirements and material selection for your intended application. DeVal Flow Controls reserves the right to change or modify product design or product without prior notice. DeVal® - Registered trademark of DeVal Flow Controls.

Distributor



DeVal Flow Controls USA

6068 Highway 73
 Geismar, LA 70734
 USA

Phone: (225) 744-4326
 Fax: (225) 744-4328

Email : sales@delvalflow.com

DeVal Flow Controls India

Office & Work : Gat. No. 25/1A,
 Kavathe, Post - Javale Tal. Khandala,
 Satara Dist., Pin - 412801,
 INDIA

Phone : +91-2169-241285
 Fax : +91-2169-241288

Email : salesindia@delvalflow.com