

# PRODUCT CATALOGUE

Products for Aviation Applications

- Filter Vessels -



**FAUDI**



**aviation**

**quality guarantees safety**

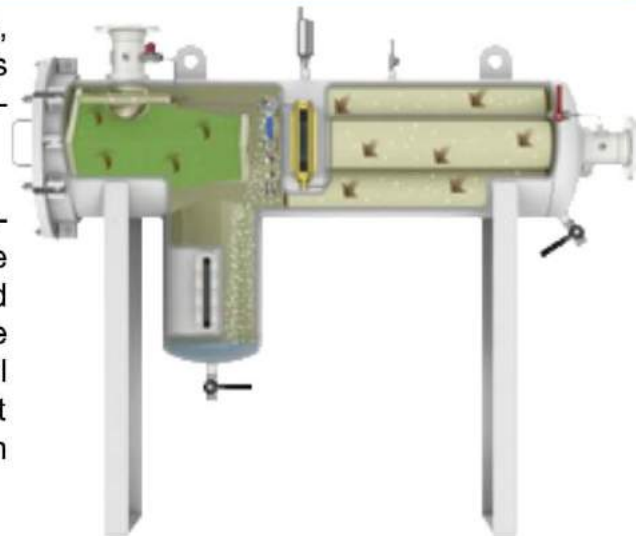


# FW6 Series

## Applications

For stationary installations at refineries, fuel storages, marine depots, as well as tank farms, according to EI 1581 5<sup>th</sup> Edition, Category C, Type S.

FAUDI Aviation Filter Water Separator Vessels are designed and built in accordance with the strict engineering guidelines and pressure vessel regulation of AD-2000. The design according to other pressure vessel regulations like ASME code with or without u-stamp, BS, GOST-R, etc., is possible on customer request.



## Technical Details

- For stationary applications
- Suitable for Jet A1, Jet A, other fluids on request
- Vessel material acc. to customer request (carbon steel, stainless steel or aluminium)
- Maximal flow rates up to 4,680 l/min
- Max. 15 ppm free water in the outlet stream
- Max. 0.26 mg/l (average) particles in the outlet stream

## Sample Identification

**FW6-2**

Series \_\_\_\_\_ Quantity of coalescer elements \_\_\_\_\_

| Type   | Coalescer Element |      | Separator-Element |      | Maximale Flow Rate |       | Volume<br>≈ l | Weight*<br>≈ kg |
|--------|-------------------|------|-------------------|------|--------------------|-------|---------------|-----------------|
|        | Model             | Qty. | Model             | Qty. | Jet-A, Jet-A1      |       |               |                 |
|        |                   |      |                   |      | l/min              | USGPM |               |                 |
| FW6- 2 | P.3-842           | 2    | 300 62 12         | 1    | 720                | 190   | ≈ 160         | ≈ 235           |
| FW6- 3 | P.3-842           | 3    | 300 63 80         | 1    | 1,080              | 285   | ≈ 210         | ≈ 275           |
| FW6- 4 | P.3-842           | 4    | 300 62 75         | 1    | 1,440              | 380   | ≈ 270         | ≈ 350           |
| FW6- 5 | P.3-842           | 5    | 300 63 36         | 1    | 1,800              | 475   | ≈ 340         | ≈ 400           |
| FW6- 7 | P.3-842           | 7    | 300 63 37         | 1    | 2,520              | 665   | ≈ 440         | ≈ 495           |
| FW6- 8 | P.3-842           | 8    | 300 62 74         | 1    | 2,880              | 760   | ≈ 525         | ≈ 540           |
| FW6- 9 | P.3-842           | 9    | 300 63 38         | 1    | 3,240              | 855   | ≈ 610         | ≈ 650           |
| FW6-11 | P.3-842           | 11   | 300 63 39         | 1    | 3,960              | 1,046 | ≈ 670         | ≈ 715           |
| FW6-13 | P.3-842           | 13   | 300 63 40         | 1    | 4,680              | 1,236 | ≈ 740         | ≈ 895           |

\* design in carbon- or stainless steel

FAUDI Aviation GmbH  
 Scharnhorststrasse 7 B  
 D-35260 Stadtallendorf  
 Germany

Phone: +49 6428 4465-275  
 Fax: +49 6428 4465-231  
 E-Mail: [contact@faudi-aviation.com](mailto:contact@faudi-aviation.com)  
 Web: [www.faudi-aviation.com](http://www.faudi-aviation.com)

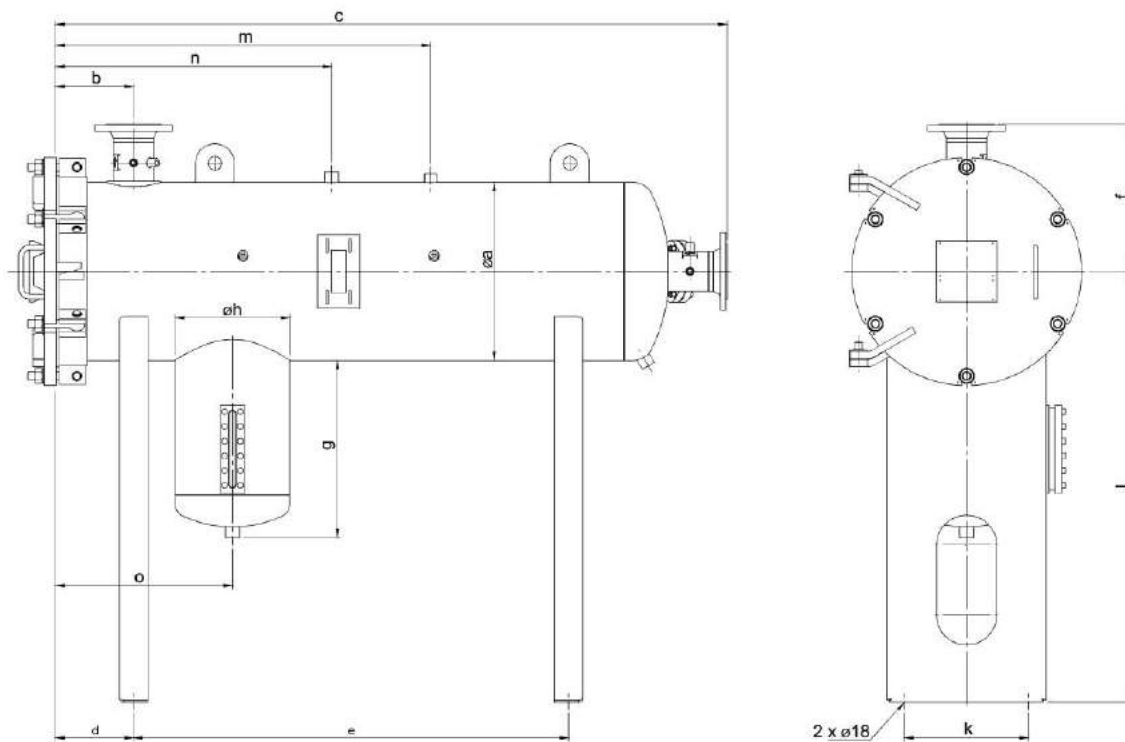
**FAUDI**  
 aviation  
 quality guarantees safety

## FW6 Series

### Standard Design

- Material in carbon- or stainless steel
- Cover installation with hinge (left) and swing bolts
- AD-2000 module H
- Design pressure: 16 bar
- Water Level Indicator (Z-3.5)
- Connections for:
  - Automatic air eliminator
  - Differential pressure measuring device (4-point)
  - Pressure relief valve
  - Sample probe connections on outlet and inlet

### Dimensions in mm for carbon steel vessel standard



minor dimension divergences reserved!

| Model No. | Connections |      | Dimensions in mm |     |       |     |       |     |      |     |     |       |       |       |     |
|-----------|-------------|------|------------------|-----|-------|-----|-------|-----|------|-----|-----|-------|-------|-------|-----|
|           | DIN         | ANSI | Ø a              | b   | c     | d   | e     | f   | g    | Ø h | k   | l     | m     | n     | o   |
| FW6- 2    | DN 80       | 3"   | 356              | 220 | 1,666 | 220 | 1,050 | 340 | ~505 | 324 | 200 | 1,230 | 960   | 680   | 500 |
| FW6- 3    | DN 100      | 4"   | 406              | 220 | 1,771 | 220 | 1,110 | 370 | ~505 | 324 | 250 | 1,230 | 1,040 | 760   | 500 |
| FW6- 4    | DN 100      | 4"   | 457              | 220 | 1,856 | 220 | 1,200 | 397 | ~505 | 324 | 300 | 1,230 | 1,080 | 800   | 500 |
| FW6- 5    | DN 100      | 4"   | 508              | 220 | 1,909 | 220 | 1,230 | 422 | ~505 | 324 | 350 | 1,230 | 1,060 | 780   | 500 |
| FW6- 7    | DN 150      | 6"   | 559              | 330 | 2,086 | 220 | 1,400 | 462 | ~505 | 324 | 400 | 1,230 | 1,180 | 880   | 500 |
| FW6- 8    | DN 150      | 6"   | 610              | 330 | 2,074 | 220 | 1,370 | 487 | ~505 | 324 | 450 | 1,230 | 1,250 | 950   | 500 |
| FW6- 9    | DN 150      | 6"   | 660              | 330 | 2,082 | 220 | 1,370 | 511 | ~505 | 324 | 500 | 1,300 | 1,250 | 950   | 500 |
| FW6-11    | DN 150      | 6"   | 711              | 320 | 2,026 | 220 | 1,310 | 541 | ~505 | 324 | 550 | 1,300 | 1,200 | 900   | 500 |
| FW6-13    | DN 200      | 8"   | 750              | 400 | 2,124 | 220 | 1,380 | 565 | ~505 | 324 | 600 | 1,300 | 1,300 | 1,000 | 500 |

**FAUDI Aviation GmbH** Phone: +49 6428 4465-275  
 Scharnhorststrasse 7 B Fax: +49 6428 4465-231  
 D-35260 Stadtallendorf E-Mail: contact@faudi-aviation.com  
 Germany Web: www.faudi-aviation.com

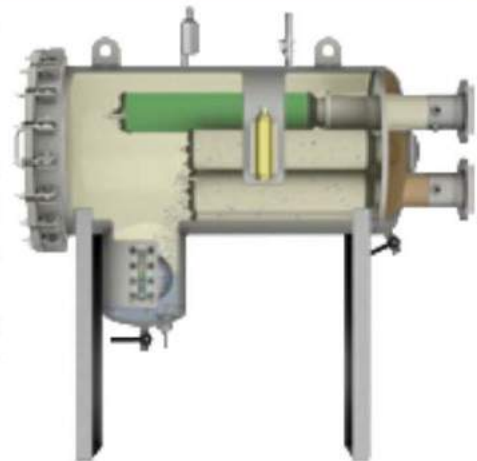


# FW10-H-Series

## Applications

For stationary installations at refineries, fuel storages, marine depots, as well as tank farms, according to EI 1581 5<sup>th</sup> Edition, Category C, Type S

FAUDI Aviation Filter Water Separator Vessels are designed and built in accordance with the strict engineering guidelines and pressure vessel regulation of AD-2000. The design according to other pressure vessel regulations like ASME code with or without u-stamp, BS, GOST-R, etc., is possible on customer request.



## Technical Details

- For stationary applications
- Suitable for Jet A1, Jet A, other fluids on request
- Vessel material acc. to customer request (carbon steel, stainless steel or aluminium)
- Maximal flow rates up to 9,500 l/min
- Max. 15 ppm free water in the outlet stream
- Max. 0,26 mg/l (average) particles in the outlet stream

## Sample Identification



| Model No.      | Separator Element |       | max. Flow Rate |       |
|----------------|-------------------|-------|----------------|-------|
|                | Model             | Qty.. | l/min          | USGPM |
| FW10-H- 2/ 559 | 60.677- 565       | 1     | 430            | 114   |
| FW10-H- 3/ 559 | 60.677- 565       | 1     | 640            | 169   |
| FW10-H- 4/ 559 | 60.677- 565       | 2     | 870            | 230   |
| FW10-H- 4/ 727 | 60.677- 565       | 2     | 1,110          | 293   |
| FW10-H- 6/ 559 | 60.677- 565       | 2     | 1,300          | 343   |
| FW10-H- 5/ 727 | 60.677- 565       | 2     | 1,390          | 367   |
| FW10-H- 6/ 727 | 60.677- 727       | 2     | 1,680          | 444   |
| FW10-H- 6/ 842 | 60.677- 842       | 2     | 2,010          | 531   |
| FW10-H- 5/1093 | 60.677- 965       | 2     | 2,290          | 605   |
| FW10-H- 6/ 965 | 60.677- 965       | 2     | 2,350          | 621   |
| FW10-H- 5/1422 | 60.677-1188       | 2     | 2,970          | 785   |

| Model No.      | Separator Element |       | max. Flow Rate |       |
|----------------|-------------------|-------|----------------|-------|
|                | Model             | Qty.. | l/min          | USGPM |
| FW10-H- 7/1093 | 60.677- 842       | 3     | 3,220          | 851   |
| FW10-H- 6/1422 | 60.677- 965       | 3     | 3,560          | 941   |
| FW10-H- 7/1422 | 60.677-1093       | 3     | 4,150          | 1.096 |
| FW10-H- 8/1422 | 60.677-1188       | 3     | 4,690          | 1.239 |
| FW10-H- 9/1422 | 60.677-1093       | 4     | 5,340          | 1.411 |
| FW10-H-10/1422 | 60.677-1188       | 4     | 5,940          | 1.569 |
| FW10-H-11/1422 | 60.677-1093       | 5     | 6,530          | 1.725 |
| FW10-H-12/1422 | 60.677-1188       | 5     | 7,120          | 1.881 |
| FW10-H-13/1422 | 60.677-1188       | 5     | 7,720          | 2,040 |
| FW10-H-17/1422 | 60.677-1290       | 7     | 9,500          | 2,510 |

FAUDI Aviation GmbH  
 Scharnhorststrasse 7 B  
 D-35260 Stadtallendorf  
 Germany

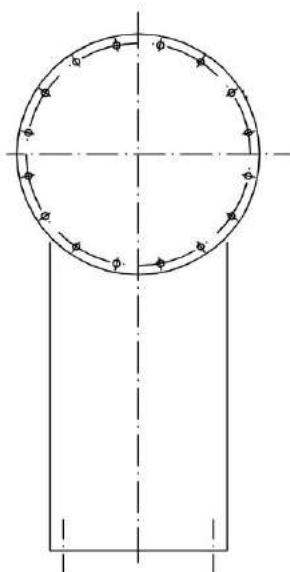
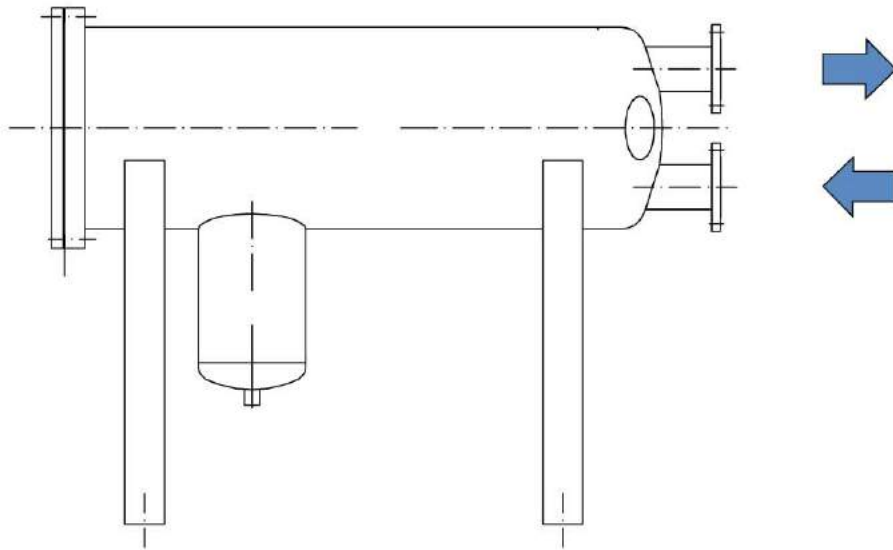
Phone: +49 6428 4465-275  
 Fax: +49 6428 4465-231  
 E-Mail: [contact@faudi-aviation.com](mailto:contact@faudi-aviation.com)  
 Web: [www.faudi-aviation.com](http://www.faudi-aviation.com)



## FW10-H Series

### Standard Design

- Made in carbon steel
- Cover installation with hinge (left) and swing bolts
- Design in AD-2000 module H
- Design pressure: 16 bar
- Water Level Indicator (Z-3.5)
- Connections for:
  - Automatic air eliminator
  - Pressure relief valve
  - Differential pressure measuring device (4-point)
  - Sample probe connections on outlet and inlet



FAUDI Aviation GmbH  
 Scharnhorststrasse 7 B  
 D-35260 Stadtallendorf  
 Germany

Phone: +49 6428 4465-275  
 Fax: +49 6428 4465-231  
 E-Mail: [contact@faudi-aviation.com](mailto:contact@faudi-aviation.com)  
 Web: [www.faudi-aviation.com](http://www.faudi-aviation.com)



# FW10-V Series

## Applications

For stationary installations at refineries, fuel storages, marine depots, as well as tank farms, according to EI 1581 5<sup>th</sup> Edition, Category C, Type S

FAUDI Aviation Filter Water Separator Vessels are designed and built in accordance with the strict engineering guidelines and pressure vessel regulation of AD-2000. The design according to other pressure vessel regulations like ASME code with or without u-stamp, BS, GOST-R, etc., is possible on customer request.

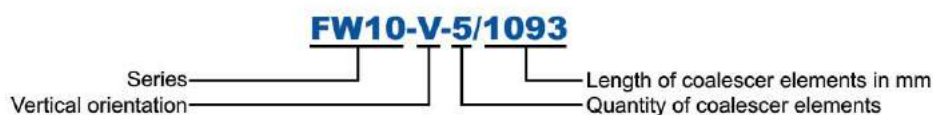


FILTER WATER SEPARATOR

## Technical Details

- For stationary applications
- Suitable for Jet A1, Jet A, other fluids on request
- Vessel material acc. to customer request (carbon steel, stainless steel or aluminium)
- Maximal flow rates up to 8.550 l/min
- Max. 15 ppm free water in the outlet stream
- Max. 0,26 mg/l (average) particles in the outlet stream

## Sample Identification



| Type           | Separator Element |      | max. Flow Rate |       |
|----------------|-------------------|------|----------------|-------|
|                | Model             | Anz. | l/min          | USGPM |
| FW10-V- 3/ 559 | 60.677- 565       | 1    | 640            | 169   |
| FW10-V- 3/ 727 | 60.677- 727       | 1    | 840            | 222   |
| FW10-V- 3/ 842 | 60.677- 727       | 1    | 960            | 254   |
| FW10-V- 5/ 727 | 60.677- 727       | 2    | 1.400          | 370   |
| FW10-V- 5/ 842 | 60.677- 727       | 2    | 1.680          | 444   |
| FW10-V- 9/ 727 | 60.677- 727       | 3    | 2.500          | 660   |
| FW10-V- 9/ 965 | 60.677- 727       | 3    | 3.000          | 792   |
| FW10-V- 9/1093 | 60.677-1093       | 3    | 4.000          | 1.057 |

| Type           | Separator Element |      | max. Flow Rate |       |
|----------------|-------------------|------|----------------|-------|
|                | Model             | Anz. | l/min          | USGPM |
| FW10-V-12/ 965 | 60.677- 900       | 5    | 4.335          | 1.145 |
| FW10-V- 9/1422 | 60.677-1093       | 3    | 4.500          | 1.189 |
| FW10-V-12/1093 | 60.677- 900       | 5    | 5.500          | 1.453 |
| FW10-V-12/1422 | 60.677-1188       | 5    | 6.500          | 1.717 |
| FW10-V-12/1422 | 60.677-1188       | 6    | 7.100          | 1.876 |
| FW10-V-14/1422 | 60.677-1188       | 6    | 8.150          | 2.153 |
| FW10-V-15/1422 | 60.677-1188       | 6    | 8.750          | 2.312 |
| FW10-V-16/1422 | 60.677-1188       | 6    | 9.500          | 2.510 |

FAUDI Aviation GmbH  
 Scharnhorststrasse 7 B  
 D-35260 Stadtallendorf  
 Germany

Phone: +49 6428 4465-275  
 Fax: +49 6428 4465-231  
 E-Mail: [contact@faudi-aviation.com](mailto:contact@faudi-aviation.com)  
 Web: [www.faudi-aviation.com](http://www.faudi-aviation.com)

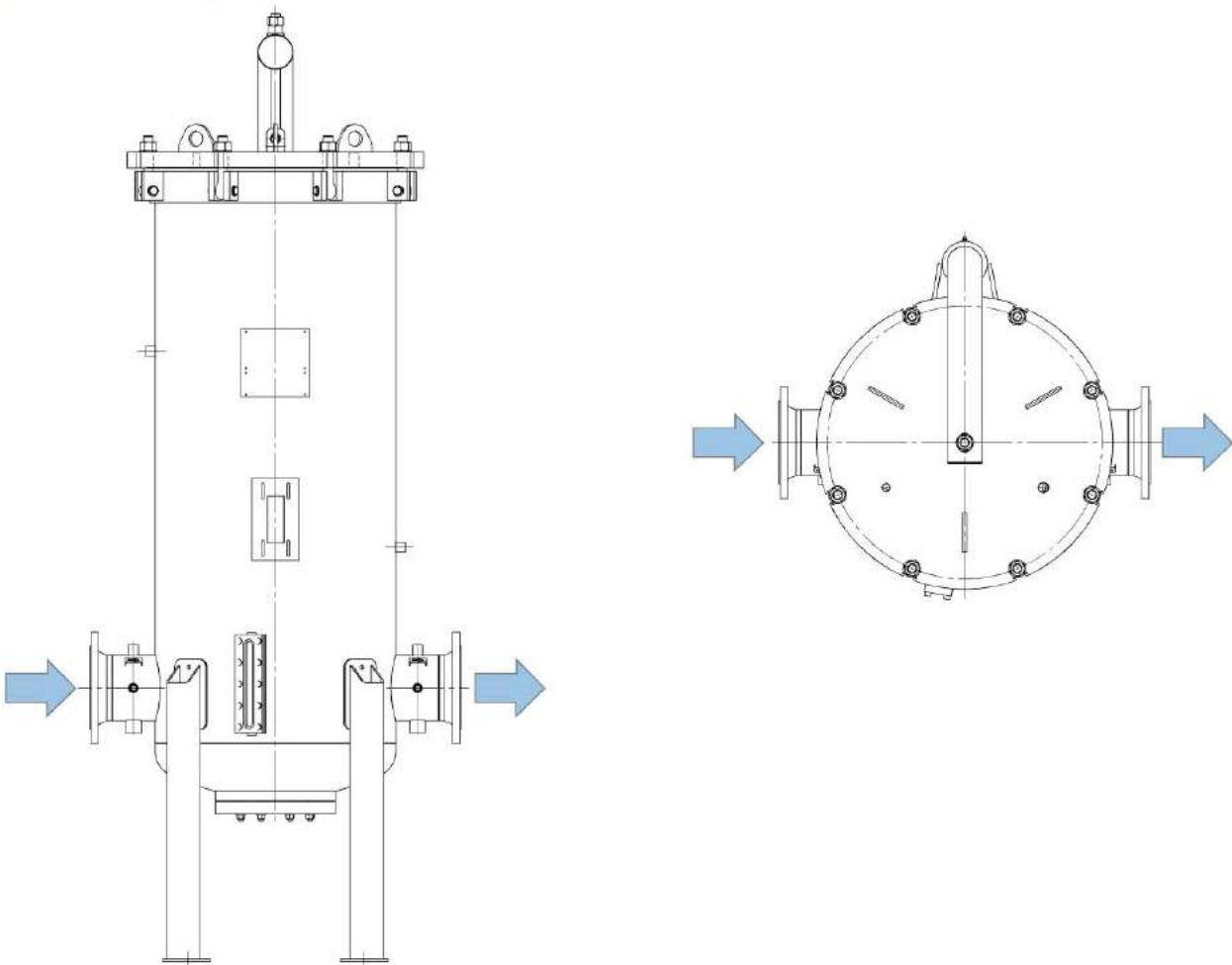


## FW10-V Series

### Standard Design

- Material in carbon steel
- Cover installation with cover lifting device and swing bolts
- AD-2000 module H
- Design pressure: 16 bar
- Water Level Indicator (Z-3.5)
- Connections for:
  - Automatic air eliminator
  - Pressure relief valve
  - Differential pressure measuring device (4-point)
  - Sample probe connections on outlet and inlet

### Dimensions in mm



|                        |         |                            |
|------------------------|---------|----------------------------|
| FAUDI Aviation GmbH    | Phone:  | +49 6428 4465-275          |
| Schornhorststrasse 7 B | Fax:    | +49 6428 4465-231          |
| D-35260 Stadtallendorf | E-Mail: | contact@faudi-aviation.com |
| Germany                | Web:    | www.faudi-aviation.com     |



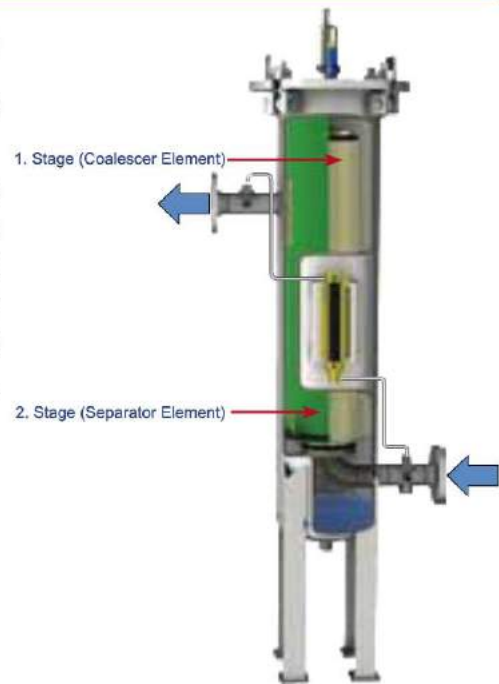


# FW9-S Series

## Applications

For stationary and mobile installations at refineries, fuel storages, marine depots, as well as tank farms, according to EI 1581 5<sup>th</sup> Edition, Category C, Type S

FAUDI Aviation Filter Water Separator Vessels are designed and built in accordance with the strict engineering guidelines DGRL 97/23/EG and pressure vessel regulation of AD-2000. The design according to other pressure vessel regulations like ASME code with or without U-Stamp, BS, GOST-R, etc., is possible on customers request.



# FILTER WATER SEPARATOR

## Technical Details

- For mobile and stationary applications
- Tested and approved acc. to EI 1581 5th edition, Cat. C, Type S
- Suitable for Jet A1, Avgas and other fluids on request
- Maximal flow rates up to 330 l/min
- Max. 15 ppm free water in the outlet
- Max. 0,26 mg/l (average) particles in the outlet

## Sample Identification

### FW9-S-1/727

Series \_\_\_\_\_ Length of Coalescer Element in mm

| Type        | Coalescer Element |      | Separator Element |      | Maximum Flow Rate               |       | Volume<br>≈ l | Weight<br>≈ kg <sup>1</sup> |
|-------------|-------------------|------|-------------------|------|---------------------------------|-------|---------------|-----------------------------|
|             | Model             | Qty. | Model             | Qty. | Jet-A, Jet-A1<br>Cat. C, Type S |       |               |                             |
|             |                   |      |                   |      | l/min                           | USGPM |               |                             |
| FW9-S-1/362 | P.3-362           | 1    | FW9-S-1(362)      | 1    | 134                             | 35    | 40            | 95                          |
| FW9-S-1/467 | P.3-467           | 1    | FW9-S-1(467)      | 1    | 177                             | 46    | 45            | 95                          |
| FW9-S-1/565 | P.3-559           | 1    | FW9-S-1(565)      | 1    | 217                             | 57    | 50            | 100                         |
| FW9-S-1/727 | P.3-727           | 1    | FW9-S-1(727)      | 1    | 283                             | 74    | 60            | 100                         |
| FW9-S-1/842 | P.3-842           | 1    | FW9-S-1(842)      | 1    | 330                             | 87    | 65            | 110                         |

<sup>1</sup>Design in Stainless Steel acc. to AD-2000 or ASME code

FAUDI Aviation GmbH  
 Scharnhorststrasse 7 B  
 D-35260 Stadtallendorf  
 Germany  
 Phone: +49 6428 4465-275  
 Fax: +49 6428 4465-231  
 E-Mail: contact@faudi-aviation.com  
 Web: www.faudi-aviation.com

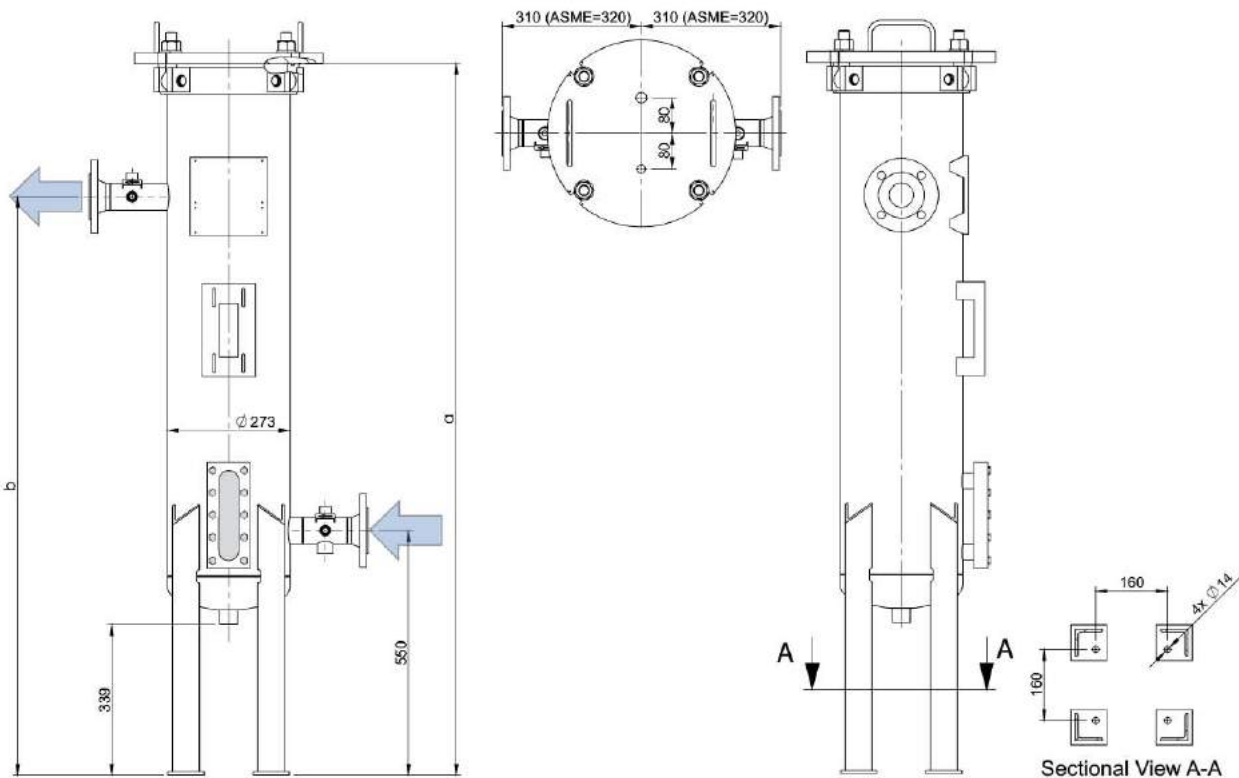
**FAUDI**  
 aviation  
 quality guarantees safety

## FW9-S Series

### Standard Design

- Made in stainless steel
- AD-2000 module H / ASME code without U-Stamp
- Design pressure: 12 bar
- Connections for:
  - Automatic air eliminator
  - Pressure relief valve
  - Water Level Indicator
  - Differential pressure measuring device (2-point)
  - Sample probe connections on inlet and outlet

### Dimensions in mm for stainless steel vessel standard



| Type        | In-/Outlet |      | Dimensions in mm* |       |       |
|-------------|------------|------|-------------------|-------|-------|
|             | DIN        | ANSI | Ø                 | a     | b     |
| FW9-S-1/362 | DN 50      | 2"   | 273               | 1,120 | 900   |
| FW9-S-1/467 | DN 50      | 2"   | 273               | 1,225 | 1,000 |
| FW9-S-1/565 | DN 50      | 2"   | 273               | 1,325 | 1,100 |
| FW9-S-1/727 | DN 50      | 2"   | 273               | 1,485 | 1,200 |
| FW9-S-1/842 | DN 50      | 2"   | 273               | 1,600 | 1,300 |

\* Design in Stainless Steel acc. to AD-2000 or ASME code

**FAUDI Aviation GmbH** Phone: +49 6428 4465-275  
 Scharnhorststrasse 7 B Fax: +49 6428 4465-231  
 D-35260 Stadtallendorf E-Mail: contact@faudi-aviation.com  
 Germany Web: www.faudi-aviation.com

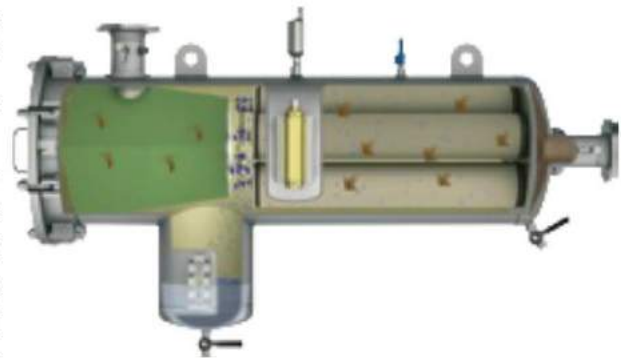


# FW6-T Series

## Applications

For mobile installations on refuellers as well as dispensers according to EI 1581 5<sup>th</sup> Edition, Category C, Type S and Type S-LW.

FAUDI Aviation Filter Water Separator Vessels are designed and built in accordance with the strict engineering guidelines and pressure vessel regulation of AD-2000. The design according to other pressure vessel regulations like ASME code with or without u-stamp, BS, GOST-R, etc., is possible on customer request.



## Technical Details

- For mobile applications
- Suitable for Jet A1, Jet A, other fluids on request
- Vessel material acc. to customer request (carbon steel, stainless steel or aluminium)
- Maximal flow rates up to 4,500 l/min resp. 3,240 l/min
- Max. 15 ppm free water in the outlet stream
- Max. 0,26 mg/l (average) particles in the outlet stream

## Sample Identification



| Type    | Coalescer Element |     | Separator Element |      | Maximale Flow Rate      |       |                            |       |
|---------|-------------------|-----|-------------------|------|-------------------------|-------|----------------------------|-------|
|         | Model             | Qty | Model             | Qty. | Jet-A, Jet-A1<br>Type S |       | Jet-A, Jet-A1<br>Type S-LW |       |
|         |                   |     |                   |      | l/min                   | USGPM | l/min                      | USGPM |
| FW6-T-2 | P.3-842           | 2   | 3006212           | 1    | 720                     | 190   | 1.000                      | 264   |
| FW6-T-3 | P.3-842           | 3   | 3006380           | 1    | 1,080                   | 285   | 1,500                      | 396   |
| FW6-T-4 | P.3-842           | 4   | 3006275           | 1    | 1,440                   | 380   | 2,000                      | 528   |
| FW6-T-5 | P.3-842           | 5   | 3006336           | 1    | 1,800                   | 475   | 2,500                      | 660   |
| FW6-T-7 | P.3-842           | 7   | 3006337           | 1    | 2,520                   | 665   | 3,500                      | 924   |
| FW6-T-8 | P.3-842           | 8   | 3006274           | 1    | 2,880                   | 760   | 4,000                      | 1,056 |
| FW6-T-9 | P.3-842           | 9   | 3006338           | 1    | 3,240                   | 855   | 4,500                      | 1,188 |

\* design in carbon- or stainless steel

FAUDI Aviation GmbH      Phone:      +49 6428 44652 - 75  
 Scharnhorststrasse 7 B      Fax:      +49 6428 44652 - 31  
 D-35260 Stadtallendorf      E-Mail:      contact@faudi-aviation.com  
 Germany      Web:      www.faudi-aviation.com

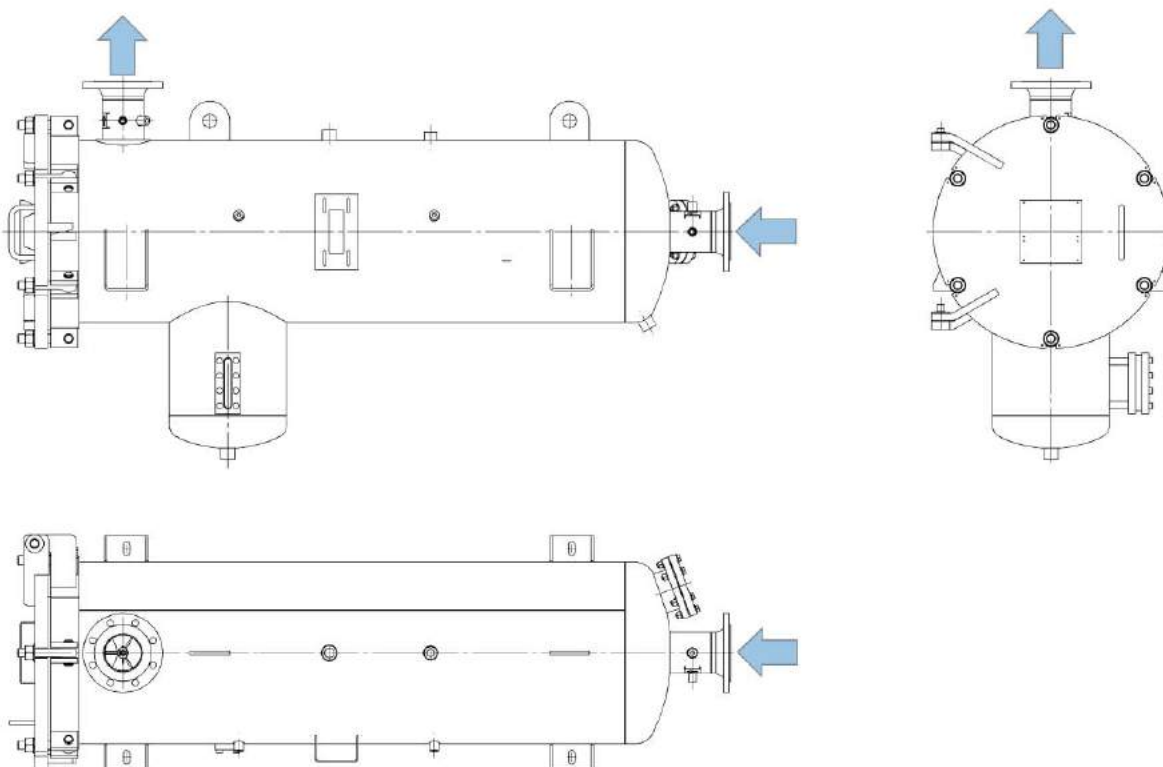


## FW6-T Series

### Standard Design

- Made in carbon or stainless steel
- Cover installation with hinge (left) and swing bolts
- AD-2000 module H
- Design pressure: 16 bar
- Water Level Indicator (Z-3.5)
- Connections for:
  - Automatic air eliminator
  - Pressure relief valve
  - Differential pressure measuring device (4-point)
  - Sample probe connections on outlet and inlet

### Dimensions in mm for carbon steel vessel standard



|                        |         |                            |
|------------------------|---------|----------------------------|
| FAUDI Aviation GmbH    | Phone:  | +49 6428 4465-275          |
| Scharnhorststrasse 7 B | Fax:    | +49 6428 4465-231          |
| D-35260 Stadtallendorf | E-Mail: | contact@faudi-aviation.com |
| Germany                | Web:    | www.faudi-aviation.com     |

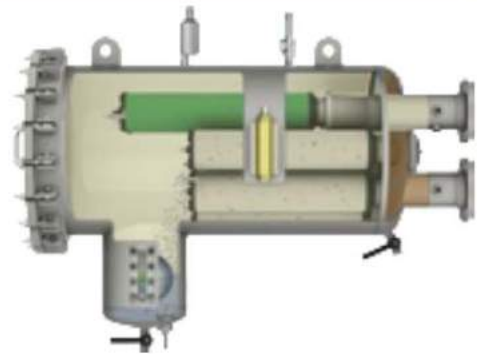

**FAUDI**  
**aviation**  
 quality guarantees safety

# FW10-H-T Series

## Applications

For mobile installations on refuellers as well as dispensers according to EI 1581 5<sup>th</sup> Edition, Category C, Type S-LW.

FAUDI Aviation Filter Water Separator Vessels are designed and built in accordance with the strict engineering guidelines and pressure vessel regulation of AD-2000. The design according to other pressure vessel regulations like ASME code with or without u-stamp, BS, GOST-R, etc., is possible on customer request.



## Technical Details

- For mobile applications
- Suitable for Jet A1, Jet A, other fluids on request
- Vessel material acc. to customer request (carbon steel, stainless steel or aluminium)
- Maximal flow rates up to 4,950 l/min
- Max. 15 ppm free water in the outlet stream
- Max. 0,26 mg/l (average) particles in the outlet stream

## Sample Identification



| Model No.        | Separator Element |      | max. Flow Rate |       |
|------------------|-------------------|------|----------------|-------|
|                  | Model             | Qty. | l/min          | USGPM |
| FW10-H-T- 2/ 559 | 60.444- 565       | 1    | 518            | 136   |
| FW10-H-T- 3/ 559 | 60.444- 600       | 1    | 777            | 205   |
| FW10-H-T- 3/ 842 | 60.444- 842       | 1    | 1,222          | 323   |
| FW10-H-T- 4/ 842 | 60.444- 600       | 2    | 1.630          | 431   |
| FW10-H-T- 4/ 965 | 60.444- 756       | 2    | 1,908          | 504   |
| FW10-H-T- 4/1093 | 60.444- 900       | 2    | 2,225          | 588   |

| Model No.        | Separator Element |      | max. Flow Rate |       |
|------------------|-------------------|------|----------------|-------|
|                  | Model             | Qty. | l/min          | USGPM |
| FW10-H-T- 4/1422 | 60.644- 900       | 2    | 2,812          | 759   |
| FW10-H-T- 7/ 727 | 60.644- 600       | 2    | 2,372          | 627   |
| FW10-H-T- 7/ 842 | 60.644- 900       | 2    | 2,852          | 753   |
| FW10-H-T- 7/ 965 | 60.644- 900       | 2    | 3,340          | 882   |
| FW10-H-T- 7/1093 | 60.644-1012       | 2    | 3,598          | 1,029 |
| FW10-H-T- 7/1422 | 60.644-1210       | 2    | 4,950          | 1,308 |

FAUDI Aviation GmbH  
 Scharnhorststrasse 7 B  
 D-35260 Stadtallendorf  
 Germany

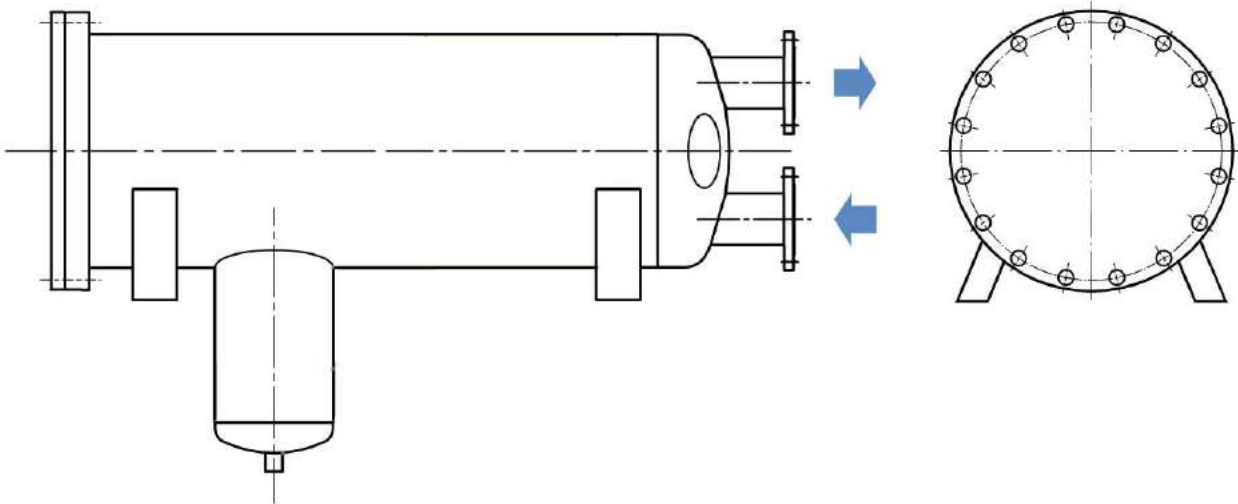
Phone: +49 6428 4465-275  
 Fax: +49 6428 4465-231  
 E-Mail: [contact@faudi-aviation.com](mailto:contact@faudi-aviation.com)  
 Web: [www.faudi-aviation.com](http://www.faudi-aviation.com)



## FW10-H-T Series

### Standard Design

- Made in carbon steel
- Cover installation with hinge (left) and swing bolts
- Design in AD-2000 module H
- Design pressure: 16 bar
- Water Level Indicator (Z-3.5)
- Connections for:
  - Automatic air eliminator
  - Pressure relief valve
  - Differential pressure measuring device (4-point)
  - Sample probe connections on outlet and inlet



\* design in carbon steel

|                        |         |                            |
|------------------------|---------|----------------------------|
| FAUDI Aviation GmbH    | Phone:  | +49 6428 4465-275          |
| Scharmhorststrasse 7 B | Fax:    | +49 6428 4465-231          |
| D-35260 Stadtallendorf | E-Mail: | contact@faudi-aviation.com |
| Germany                | Web:    | www.faudi-aviation.com     |

**FAUDI**  
 **aviation**  
 quality guarantees safety

# VFC Series

## Description

Approved and tested according to EI 1581 5<sup>th</sup> edition, Category C, Type S & S-LW and Category M, Type S.

The vertical filter water separator Type VFC-1 fascinates by high economic efficiency as well as an easy installation and servicing.



## Applications

- Airfield refuelling cars
- Helicopter refuelling
- stationary and mobile fuelling units on small airfields/airports
- Refuelling of small aircrafts
- Filtration of diesel on low flow rates
- Filtration of heating oil
- Refuelling of small ships and barks

## Fuels

- Kerosine (Jet Fuel)
- Military Jet Fuels
- AVGAS
- Diesel (other type of element)

## Technical Details

| VFC-1/254-10 | Micron rating (µm) | max. Flow Rate (l/min) |                   |                |        | max. Differential Pressure (bar) |
|--------------|--------------------|------------------------|-------------------|----------------|--------|----------------------------------|
|              |                    | Kerosine               |                   | JP4, JP5, JP8  | Diesel |                                  |
|              |                    | Cat. C, Type S         | Cat. C, Type S-LW | Cat. M, Type S |        |                                  |
| CS6-254-1    | 1                  | 71                     | 89                | -              | 29     | 1.1                              |
| MCS6-254-1   | 1                  | -                      | -                 | 52             |        | 1.1                              |

| VFC-1/355-10 | Micron rating (µm) | max. Flow Rate (l/min) |                   |                |        | max. Differential Pressure (bar) |
|--------------|--------------------|------------------------|-------------------|----------------|--------|----------------------------------|
|              |                    | Kerosine               |                   | JP4, JP5, JP8  | Diesel |                                  |
|              |                    | Cat. C, Type S         | Cat. C, Type S-LW | Cat. M, Type S |        |                                  |
| CS6-355-1    | 1                  | 110                    | 136               | -              | 45     | 1.1                              |
| MCS6-355-1   | 1                  | -                      | -                 | 74             |        | 1.1                              |

- Design Pressure: 10 bar
- Design Temperature: -10°C to +50°C

## Maintenance & Inspection

- Vessel cover with Quick Opening for easiest Maintenance

FAUDI Aviation GmbH  
 Scharnhorststrasse 7 B  
 D-35260 Stadtallendorf  
 Germany

Phone: +49 6428 4465-275  
 Fax: +49 6428 4465-231  
 E-Mail: contact@faudi-aviation.com  
 Web: www.faudi-aviation.com



## VFC Series

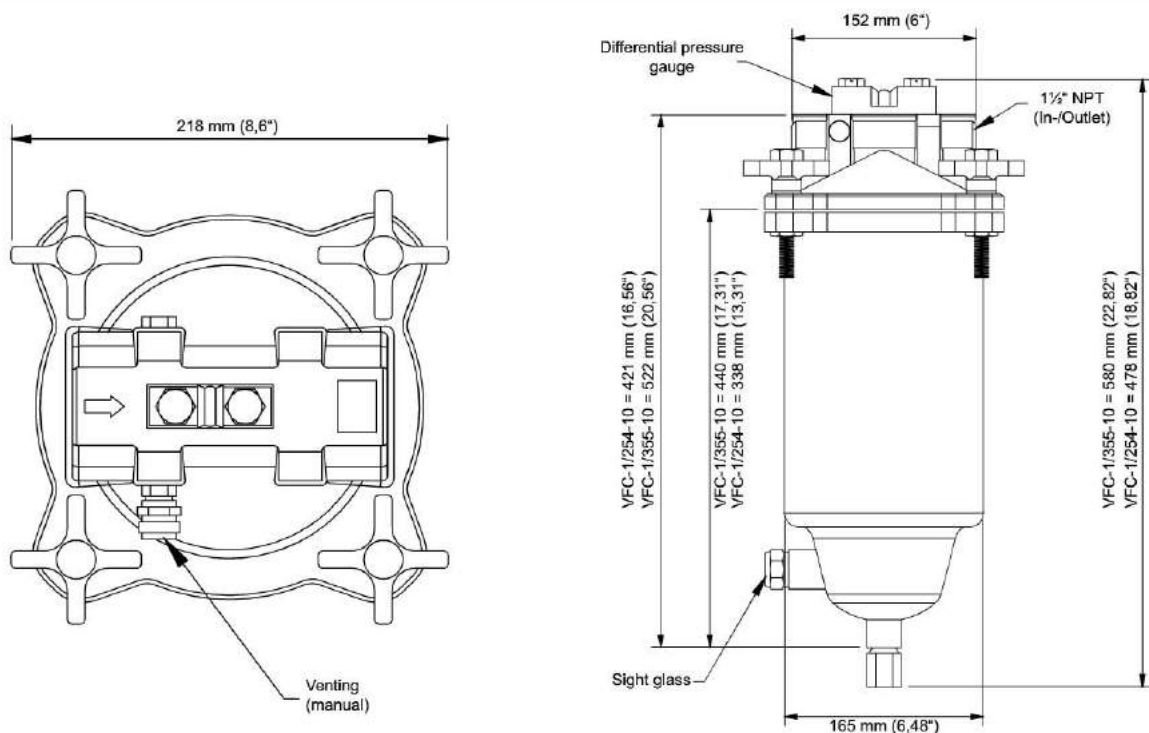
### Standard Design

- Head of vessel made from die-cast aluminium
- Vessel made from carbon steel (painted)
- Design pressure 10 bar on +50°C
- Vessel cover with quick opening
- In-/Outlet 1 ½" NPT
- Manual water drain
- Sight glass
- Differential Pressure Gauge
- Inclusive 1 ea CS6-254-1 or CS6-355-1



Coalescer/Separator-Element

### Dimensions



| Spare Parts   | Quantity | Article No. |
|---|----------|-------------|
| VFC-1/254-10  | 1        | 3 002 528   |
| VFC-1/355-10  | 1        | 3 002 530   |
| Differential pressure gauge                                 | 1        | 3 002 531   |
| O-Ring for differential pressure gauge 20,5 x 3 (Viton®)    | 2        | 3 003 830   |
| O-Ring for differential pressure gauge 9,52 x 1,78 (Viton®) | 2        | 3 003 831   |
| Seal 158x5,3 (BUNA-N) or                                    | 1        | 3 005 251   |
| Seal 158x5,3 (VITON®)                                       | 1        | 3 005 252   |
| Coalescer-/Separator Type CS6-254-1                         |          | 3 003 983   |
| Coalescer-/Separator Type CS6-355-1                         |          | 3 003 984   |
| Coalescer-/Separator Type MCS6-254-1                        |          | 3 004 519   |
| Coalescer-/Separator Type MCS6-355-1                        |          | 3 004 507   |

FAUDI Aviation GmbH Phone: +49 6428 4465-275  
 Scharnhorststrasse 7 B Fax: +49 6428 4465-231  
 D-35260 Stadtallendorf E-Mail: contact@faudi-aviation.com  
 Germany Web: www.faudi-aviation.com

**FAUDI**  

**aviation**  
 quality guarantees safety



# FWE Series

## Applications

For stationary installations at refineries, fuel storages, marine depots, as well as tank farms, according EI 1581 5<sup>th</sup> Edition Cat. M.

FAUDI Aviation Filter Water Separator Vessels are designed and built in accordance with the strict engineering guidelines and pressure vessel regulation of AD-2000.

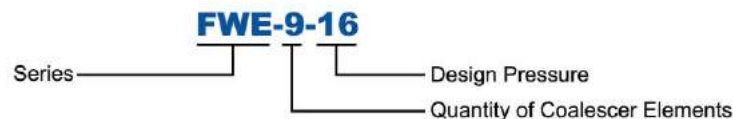


**FILTER WATER SEPARATOR**

## Technical Details

- For stationary applications
- Suitable for JP-4 and JP-8
- Vessel material acc. to customer request (carbon steel, stainless steel or aluminium)
- Maximal flow rates up to 5,000 l/min
- Max. 15 ppm free water in the outlet stream
- Max. 0.26 mg/l (average) particles in the outlet stream

## Sample Identification



| Series | Coalescer Element |      | Separator Element |      | Maximale Flow Rate |       | Connections |      |
|--------|-------------------|------|-------------------|------|--------------------|-------|-------------|------|
|        | Model             | Qty. | Model             | Qty. | l/min              | USGPM | DIN         | ANSI |
| FWE- 3 | Y.1-842/5         | 3    | on request        | 1    | 750                | 198   | DN 80       | 3"   |
| FWE- 4 | Y.1-842/5         | 4    |                   | 1    | 1,000              | 264   | DN 100      | 4"   |
| FWE- 5 | Y.1-842/5         | 5    |                   | 1    | 1,250              | 330   | DN 100      | 4"   |
| FWE- 7 | Y.1-842/5         | 7    |                   | 1    | 1,750              | 462   | DN 100      | 5"   |
| FWE- 9 | Y.1-842/5         | 9    |                   | 1    | 2,250              | 594   | DN 150      | 5"   |
| FWE-11 | Y.1-842/5         | 11   |                   | 1    | 2,750              | 726   | DN 150      | 6"   |
| FWE-13 | Y.1-842/5         | 13   |                   | 1    | 3,250              | 858   | DN 150      | 6"   |
| FWE-17 | Y.1-842/5         | 17   |                   | 1    | 4,250              | 1,122 | DN 200      | 8"   |
| FWE-20 | Y.1-842/5         | 20   |                   | 1    | 5,000              | 1,320 | DN 200      | 8"   |

\* design in carbon steel

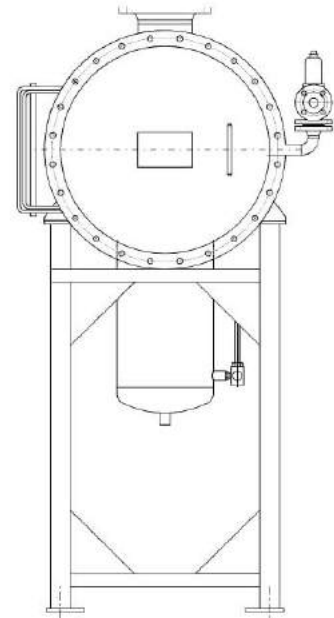
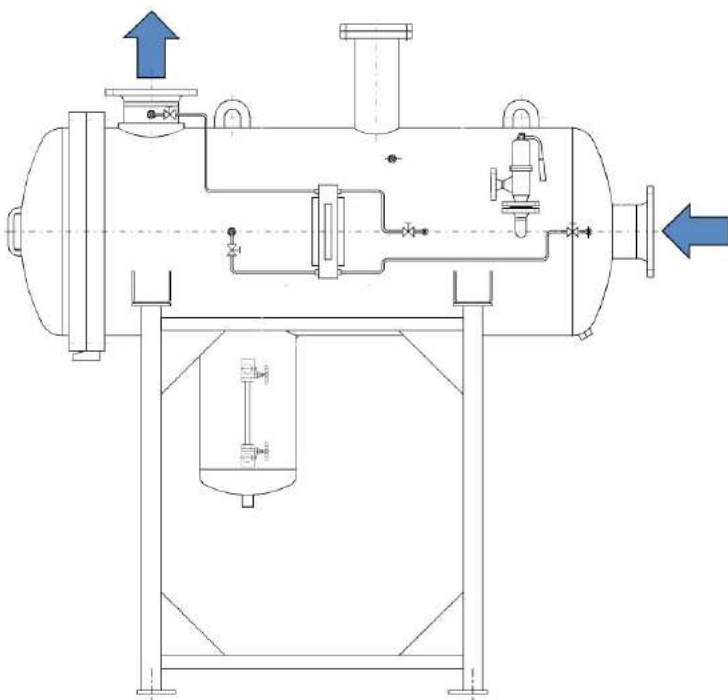
FAUDI Aviation GmbH      Phone:      +49 6428 4465-275  
 Scharnhorststrasse 7 B      Fax:      +49 6428 4465-231  
 D-35260 Stadtallendorf      E-Mail:      contact@faudi-aviation.com  
 Germany      Web:      www.faudi-aviation.com



## FWE Series

### Standard Design

- Made in carbon steel
- Cover installation with hinge (left) and swing bolts
- Design acc. to AD-2000 module H
- Design pressure: 16 bar
- Water Level Indicator (Z-3.5)
- Connections for:
  - Automatic air eliminator
  - Pressure relief valve
  - Differential pressure measuring device (4-point)
  - Sample probe connections on outlet and inlet



FAUDI Aviation GmbH  
Scharnhorststrasse 7 B  
D-35260 Stadtallendorf  
Germany

Phone: +49 6428 4465-275  
Fax: +49 6428 4465-231  
E-Mail: [contact@faudi-aviation.com](mailto:contact@faudi-aviation.com)  
Web: [www.faudi-aviation.com](http://www.faudi-aviation.com)

**FAUDI**  
● ● ● aviation  
quality guarantees safety

# FWE-STS-M Series

## Applications

For stationary installations at refineries, fuel storages, marine depots, as well as tank farms, according to STS-M 126 and TL 4330-0001.

FAUDI Aviation Filter Water Separator Vessels are designed and built in accordance with the strict engineering guidelines and pressure vessel regulation of AD-2000.



FILTER WATER SEPARATOR

## Technical Details

- For stationary applications
- Suitable for JP-4 and JP-8
- Vessel material acc. to customer request (carbon steel, stainless steel or aluminium)
- Maximal flow rates up to 4.000 l/min
- Max. 5 ppm free water in the outlet stream
- Max. 0,5 mg/l (average) particles in the outlet stream

## Sample Identification



| Series | Coalescer Element |      | Separator Element |      | Maximale Flow Rate |       | Volume  | Weight |
|--------|-------------------|------|-------------------|------|--------------------|-------|---------|--------|
|        | Model             | Qty. | Model             | Qty. | l/min              | USGPM | l       | kg     |
| FWE- 3 | D.1-842           | 3    | on request        | 1    | 600                | 158   | ≈ 224   | ≈ 444  |
| FWE- 4 | D.1-842           | 4    |                   | 1    | 800                | 211   | ≈ 285   | ≈ 492  |
| FWE- 5 | D.1-842           | 5    |                   | 1    | 1.000              | 264   | ≈ 340   | ≈ 544  |
| FWE- 7 | D.1-842           | 7    |                   | 1    | 1.400              | 369   | ≈ 441   | ≈ 602  |
| FWE- 9 | D.1-842           | 9    |                   | 1    | 1.800              | 475   | ≈ 638   | ≈ 697  |
| FWE-11 | D.1-842           | 11   |                   | 1    | 2.200              | 581   | ≈ 748   | ≈ 749  |
| FWE-13 | D.1-842           | 13   |                   | 1    | 2.600              | 686   | ≈ 937   | ≈ 816  |
| FWE-17 | D.1-842           | 17   |                   | 1    | 3.400              | 898   | ≈ 1.111 | ≈ 892  |
| FWE-20 | D.1-842           | 20   |                   | 1    | 4.000              | 1.056 | ≈ 1.344 | ≈ 930  |

<sup>11</sup> design in carbon steel

FAUDI Aviation GmbH      Phone:      +49 6428 4465-275  
 Scharnhorststrasse 7 B      Fax:      +49 6428 4465-231  
 D-35260 Stadtallendorf      E-Mail:      contact@faudi-aviation.com  
 Germany      Web:      www.faudi-aviation.com

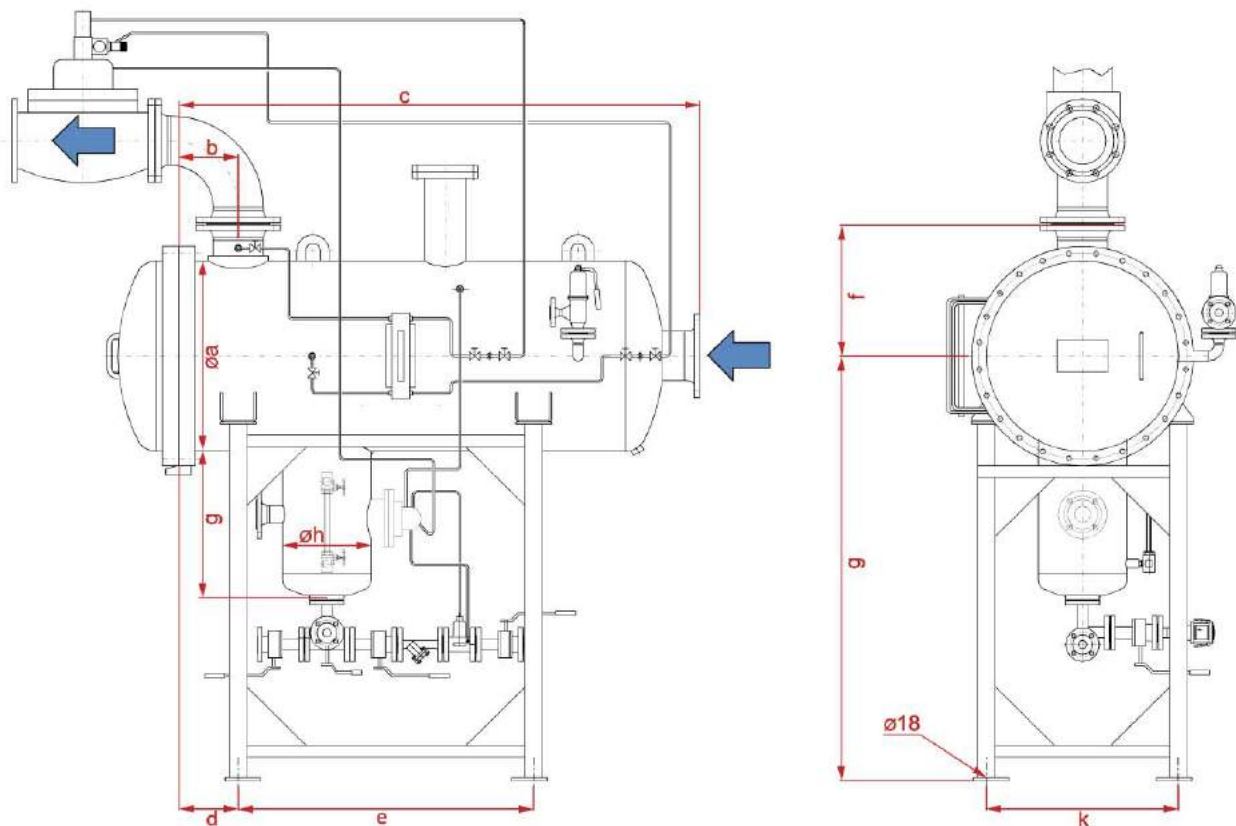


## FWE-ST5-M Series

### Standard Design

- Made in carbon steel, outside prime coated, inside epoxy coated acc. to MIL-C-4556
- Cover installation with hinge (left)
- AD-2000 module H
- Design pressure: 16 bar
- Connections for:
  - Automatic air eliminator
  - Pressure relief valve
  - Differential pressure measuring device (4-point)
  - Sample probe connections on outlet and inlet

### Dimensions in mm for carbon steel vessel standard



| Model No. | Connections |      | Dimensions in mm |     |       |     |       |     |     |     |     |       |
|-----------|-------------|------|------------------|-----|-------|-----|-------|-----|-----|-----|-----|-------|
|           | DIN         | ANSI | Ø a              | b   | c     | d   | e     | f   | g   | Øh  | k   | l     |
| FWE- 3    | DN 80       | 3"   | 400              | 225 | 1.775 | 250 | 1.080 | 355 | 475 | 324 | 250 | 1.230 |
| FWE- 4    | DN 100      | 4"   | 450              | 225 | 1.797 | 250 | 1.080 | 385 | 475 | 324 | 300 | 1.230 |
| FWE- 5    | DN 100      | 4"   | 500              | 225 | 1.815 | 250 | 1.090 | 420 | 475 | 324 | 350 | 1.230 |
| FWE- 7    | DN 100      | 5"   | 550              | 247 | 1.880 | 250 | 1.125 | 440 | 475 | 324 | 400 | 1.230 |
| FWE- 9    | DN 150      | 5"   | 650              | 305 | 1.995 | 250 | 1.230 | 490 | 475 | 324 | 500 | 1.295 |
| FWE-11    | DN 150      | 6"   | 700              | 300 | 2.015 | 250 | 1.240 | 530 | 475 | 324 | 550 | 1.445 |
| FWE-13    | DN 150      | 6"   | 750              | 300 | 2.035 | 250 | 1.230 | 555 | 475 | 324 | 600 | 1.470 |
| FWE-17    | DN 200      | 8"   | 850              | 300 | 2.055 | 250 | 1.230 | 595 | 475 | 324 | 700 | 1.495 |
| FWE-20    | DN 200      | 8"   | 900              | 375 | 2.210 | 250 | 1.380 | 620 | 475 | 324 | 750 | 1.520 |

**FAUDI Aviation GmbH** Phone: +49 6428 4465-275  
 Scharnhorststrasse 7 B Fax: +49 6428 4465-231  
 D-35260 Stadtallendorf E-Mail: contact@faudi-aviation.com  
 Germany Web: www.faudi-aviation.com

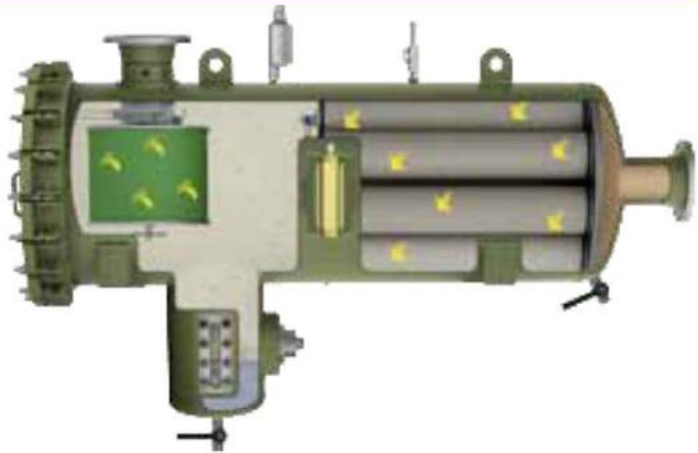
  
**FAUDI**  
 aviation  
 quality guarantees safety

# FWE-T Series

## Applications

For installation at mobile refuelling units according to EI 1581 5<sup>th</sup> Edition Cat. M.

FAUDI Aviation Filter Water Separator Vessels are designed and built in accordance with the strict engineering guidelines and pressure vessel regulation of AD-2000.



## Technical Details

- For mobile applications
- Suitable for JP-4 and JP-8
- Vessel material acc. to customer request (carbon steel, stainless steel or aluminium)
- Maximal flow rates up to 4.000 l/min
- Max. 15 ppm free water in the outlet stream
- Max. 0,25 mg/l (average) particles in the outlet stream

## Sample Identification



| Series   | Coalescer Element |      | Separator Element |      | Maximale Flow Rate |       | Connections |      |
|----------|-------------------|------|-------------------|------|--------------------|-------|-------------|------|
|          | Model             | Qty. | Model             | Qty. | l/min              | USGPM | DIN         | ANSI |
| FWE-T- 3 | Y.1-842/5         | 3    | on request        | 1    | 750                | 198   | DN 80       | 3"   |
| FWE-T- 4 | Y.1-842/5         | 4    |                   | 1    | 1,000              | 264   | DN 100      | 4"   |
| FWE-T- 5 | Y.1-842/5         | 5    |                   | 1    | 1,250              | 330   | DN 100      | 4"   |
| FWE-T- 7 | Y.1-842/5         | 7    |                   | 1    | 1,750              | 462   | DN 100      | 5"   |
| FWE-T- 9 | Y.1-842/5         | 9    |                   | 1    | 2,250              | 594   | DN 150      | 5"   |
| FWE-T-11 | Y.1-842/5         | 11   |                   | 1    | 2,750              | 726   | DN 150      | 6"   |
| FWE-T-13 | Y.1-842/5         | 13   |                   | 1    | 3,250              | 858   | DN 150      | 6"   |
| FWE-T-17 | Y.1-842/5         | 17   |                   | 1    | 4,250              | 1,122 | DN 200      | 8"   |
| FWE-T-20 | Y.1-842/5         | 20   |                   | 1    | 5,000              | 1,320 | DN 200      | 8"   |

\* design in carbon steel

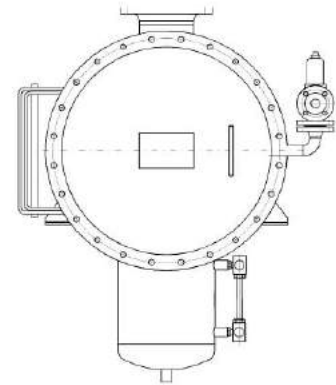
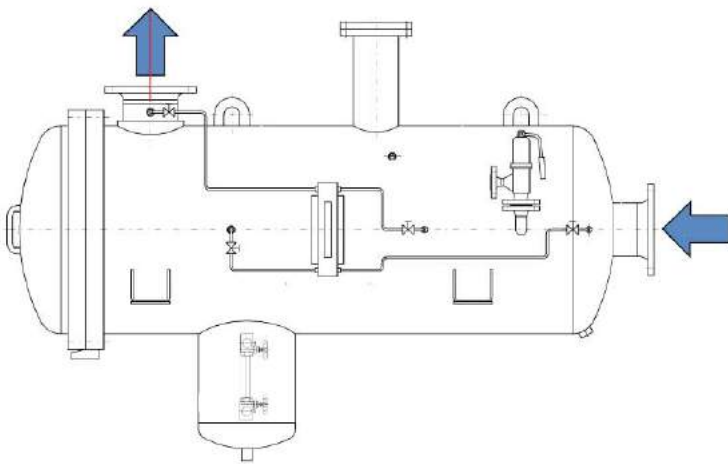
FAUDI Aviation GmbH Phone: +49 6428 4465-275  
 Scharnhorststrasse 7 B Fax: +49 6428 4465-231  
 D-35260 Stadtallendorf E-Mail: contact@faudi-aviation.com  
 Germany Web: www.faudi-aviation.com



## FWE-T Series

### Standard Design

- Made in carbon steel
- Cover installation with hinge (left) and swing bolts
- Design acc. to AD-2000 module H
- Design pressure: 16 bar
- Water Level Indicator (Z-3.5)
- Connections for:
  - Automatic air eliminator
  - Pressure relief valve
  - Differential pressure measuring device (4-point)
  - Sample probe connections on outlet and inlet



|                        |         |                            |
|------------------------|---------|----------------------------|
| FAUDI Aviation GmbH    | Phone:  | +49 6428 4465-275          |
| Schornhorststrasse 7 B | Fax:    | +49 6428 4465-231          |
| D-35260 Stadtallendorf | E-Mail: | contact@faudi-aviation.com |
| Germany                | Web:    | www.faudi-aviation.com     |

**FAUDI**  
● ● ● aviation  
quality guarantees safety

# MF Series

# MICROFILTER

## Application

FAUDI Aviation Micro Filters are used wherever there is a demand for high quality, economic and reliable filtration. They are designed to continuously remove fine particles such as rust, dirt, sand and pipe scale from Aviation Fuel systems. These highly efficient Micro Filters are used at refineries, bulk fuel depots, transfer stations and airports predominantly prior to Filter/Water Separators to protect and prolong Coalescer element life.

FAUDI Aviation Micro Filters are offering the following advantages:

- Safe operation using tried and tested technique
- Easy installation and maintenance
- Quick open/closure (as option)
- Alternative degrees of filtration available by changing element type
- Economic due to increased surface area
- long life time because high solid holding capacity



## Construction

Standard version

Design pressure: 10 bar

Design temperature: -10 to +50°C

Design code: AD 2000 (German Pressure Regulation Rules)

Material of construction: C-Stahl

Internal coating: acc. to MIL-PRF-4556 (latest Edition)

Other design pressures as well as other materials like aluminium or stainless steel are available upon request.

## Further Applications

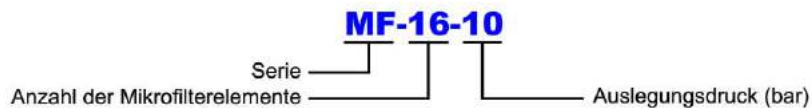
- thin mineral oils, jet propulsion fuels, test and super grade petrol, diesel fuel, solvents, fuel oil
- Natural gas, Refinery gases, Air, Nitrogen
- Lubricants, Hydraulic fluid and turbine oil
- Industrial and cooling water

|                        |         |                            |
|------------------------|---------|----------------------------|
| FAUDI Aviation GmbH    | Phone:  | +49 6428 4465-275          |
| Scharnhorststrasse 7 B | Fax:    | +49 6428 4465-231          |
| D-35260 Stadtallendorf | E-Mail: | contact@faudi-aviation.com |
| Germany                | Web:    | www.faudi-aviation.com     |



## MF Series

### Sample of Identification



### Technical Details

- for stationary and mobile applications
- according to EI 1590 (equipped with 6"-Microfilter Elements)
- for Jet A1, JP 1, JP 4, JP 8, Kerosene and other thin fluids
- maximum flow rates up to 40.000 l/min,  
higher flow rates on request

| Fitted with 4" microfilter elements |                     |    |  |        |        |        |
|-------------------------------------|---------------------|----|--|--------|--------|--------|
| Model No.                           | Microfilter element |    | Flow rates for liquids to 1,5°C<br>Organized to filter fineness (l/min.) |        |        |        |
|                                     | Qty.                | Ø  | 0,5 µm   | 1 µm   | 2 µm   | 5 µm   |
| MF- 1                               | 1                   | 4" | 280  | 320    | 360    | 400    |
| MF- 3                               | 3                   | 4" | 840  | 960    | 1.080  | 1.200  |
| MF- 7                               | 7                   | 4" | 1.969  | 2.240  | 2.520  | 2.800  |
| MF- 10                              | 10                  | 4" | 2.800  | 3.200  | 3.600  | 4.000  |
| MF- 16                              | 16                  | 4" | 4.480  | 5.120  | 5.760  | 6.400  |
| MF- 20                              | 20                  | 4" | 5.600  | 6.400  | 7.200  | 8.000  |
| MF- 28                              | 28                  | 4" | 7.840  | 8.960  | 10.080 | 11.200 |
| MF- 35                              | 35                  | 4" | 9.800  | 11.200 | 12.600 | 14.000 |
| MF- 41                              | 41                  | 4" | 11.480   | 13.120 | 14.760 | 16.400 |
| MF- 50                              | 50                  | 4" | 14.000   | 16.000 | 18.000 | 20.000 |
| MF- 61                              | 61                  | 4" | 17.080   | 19.520 | 21.960 | 24.400 |
| MF- 80                              | 80                  | 4" | 22.400   | 25.600 | 28.800 | 32.000 |
| MF-100                              | 100                 | 4" | 28.000   | 32.000 | 36.000 | 40.000 |

| Fitted with 6" microfilter elements |                     |    |  |        |        |        |
|-------------------------------------|---------------------|----|--|--------|--------|--------|
| Model No.                           | Microfilter element |    | Flow rates for liquids to 1,5°C<br>Organized to filter fineness (l/min.) |        |        |        |
|                                     | Qty.                | Ø  | 0,5 µm   | 1 µm   | 2 µm   | 5 µm   |
| MF- 4/1130                          | 4                   | 6" | 1.760  | 2.240  | 2.720  | 3.200  |
| MF- 6/1130                          | 6                   | 6" | 2.640  | 3.360  | 4.080  | 4.800  |
| MF- 7/1130                          | 7                   | 6" | 3.080  | 3.920  | 4.760  | 5.600  |
| MF- 8/1130                          | 8                   | 6" | 3.520  | 4.480  | 5.440  | 6.400  |
| MF- 9/1130                          | 9                   | 6" | 3.960  | 5.040  | 6.120  | 7.200  |
| MF-11/1130                          | 11                  | 6" | 4.840  | 6.160  | 7.480  | 8.800  |
| MF-12/1130                          | 12                  | 6" | 5.280  | 6.720  | 8.160  | 9.600  |
| MF-13/1130                          | 13                  | 6" | 5.720  | 7.280  | 8.840  | 10.400 |
| MF-15-1130                          | 15                  | 6" | 6.600  | 8.400  | 10.200 | 12.000 |
| MF-20/1130                          | 20                  | 6" | 8.800  | 11.200 | 13.600 | 16.000 |

|  |   |  |
|--|---|--|
| FAUDI Aviation GmbH<br>Scharnhorststrasse 7 B<br>D-35260 Stadtallendorf<br>Germany | Phone: +49 6428 4465-275<br>Fax: +49 6428 4465-231<br>E-Mail: <a href="mailto:contact@faudi-aviation.com">contact@faudi-aviation.com</a><br>Web: <a href="http://www.faudi-aviation.com">www.faudi-aviation.com</a> | <br><b>FAUDI</b><br>aviation<br>quality guarantees safety |
|--|---|--|



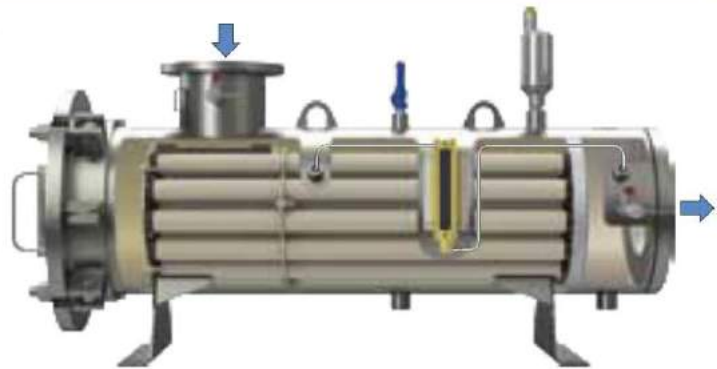
# FFM Series

# FILTER MONITOR

## Applications

FAUDI Aviation Filter Monitors are simple compact units which can easily be installed and serviced. They are developed in particular for mobile fuelling installation and can be delivered in two versions. Type FFM without and type FFMI with Interlock system.

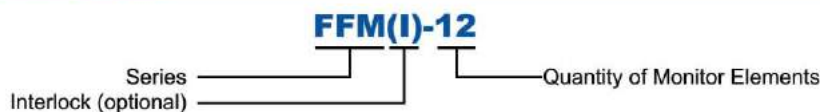
The FAUDI Aviation interlock system is an additional safety device designed to prevent closure of the cover should the full amount of monitor elements not be fitted. The interlock prevents unfiltered fuel being delivered if an element is missing



## Technical Details

- For mobile and/or stationary applications
- According to EI 1583 6<sup>th</sup> Edition
- Suitable for Jet A1, etc
- Vessel material acc. to customer request (carbon steel, stainless steel or aluminium)
- Maximal flow rate up to 4,600 l/min (higher flow rates on request)
- Max. 15 ppm free water in outlet stream
- Max. 0.26 mg/l (average) particles in outlet stream
- Outer diameter of monitor elements: 2 inch
- Nominale micron rating of monitor elements: 1 µm

## Sample Identification



| Type      | Monitor Element |      | Element Length |      | Max. Flow Rate |       | Volume | Weight* (FFM) | Weight* (FFMI) |
|-----------|-----------------|------|----------------|------|----------------|-------|--------|---------------|----------------|
|           | Model           | Qty. | mm             | inch | l/min          | USGPM | ≈ l    | ≈ kg          | ≈ kg           |
| FFM- 3    | M.2-770/6       | 3    | 770            | 30   | 345            | 91    | ≈ 22   | ≈ 50          | n.a.           |
| FFM- 5    | M.2-770/6       | 5    | 770            | 30   | 575            | 151   | ≈ 22   | ≈ 50          | n.a.           |
| FFM-10    | M.2-770/6       | 10   | 770            | 30   | 1,150          | 303   | ≈ 60   | ≈ 105         | n.a.           |
| FFM-12    | M.2-770/6       | 12   | 770            | 30   | 1,380          | 364   | ≈ 60   | ≈ 120         | n.a.           |
| FFM(I)-20 | M.2-770/6       | 20   | 770            | 30   | 2,300          | 607   | ≈ 85   | ≈ 138         | ≈ 145          |
| FFM(I)-30 | M.2-770/6       | 30   | 770            | 30   | 3,450          | 911   | ≈ 135  | ≈ 190         | ≈ 200          |
| FFM(I)-36 | M.2-770/6       | 36   | 770            | 30   | 4,140          | 1,093 | ≈ 170  | ≈ 235         | ≈ 248          |
| FFM(I)-40 | M.2-770/6       | 40   | 770            | 30   | 4,600          | 1,215 | ≈ 210  | ≈ 270         | ≈ 285          |

\* Design in carbon or stainless steel

FAUDI Aviation GmbH      Phone:      +49 6428 4465-275  
 Scharnhorststrasse 7 B      Fax:      +49 6428 4465-231  
 D-35260 Stadtallendorf      E-Mail:      contact@faudi-aviation.com  
 Germany      Web:      www.faudi-aviation.com

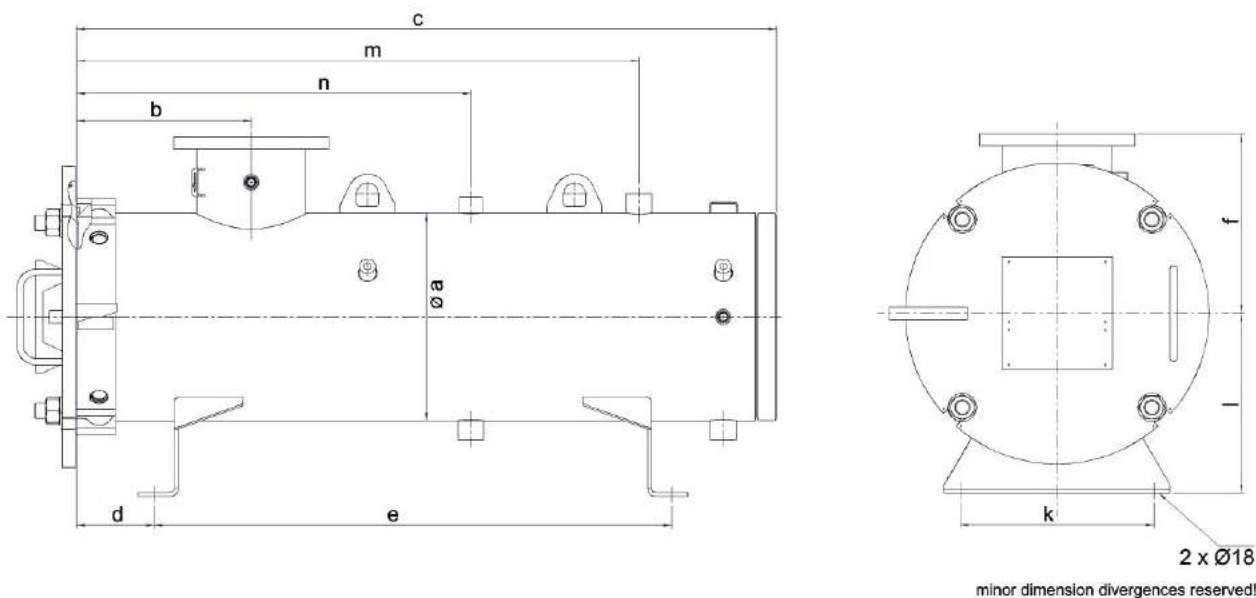


## FFM Series

### Standard Design

- Material in carbon- or stainless steel
- Cover installation with hinge (left) and swing bolts
- AD-2000 module H
- Design pressure: 16 bar
- Connections for:
  - Automatic air eliminator
  - Pressure relief valve
  - Differential pressure measuring device (2-point)
  - Sample probe connections on outlet and inlet

### Dimensions in mm for carbon steel vessel standard



| Type      | In-/Outlet |    | Dimensions in mm |     |       |        |     |     |     |     |     |     |        |     |
|-----------|------------|----|------------------|-----|-------|--------|-----|-----|-----|-----|-----|-----|--------|-----|
|           |            |    | Ø a              | b   | FFM   | FFM(I) | d   | e   | f   | k   | l   | FFM | FFM(I) | n   |
|           | c          | c  |                  |     | m     | m      |     |     |     |     |     |     |        |     |
| FFM- 3    | DN 50      | 2" | 168              | 200 | 1,050 | n.a.   | 290 | 606 | 170 | 150 | 170 | 830 | n.a.   | 520 |
| FFM- 5    | DN 50      | 2" | 168              | 200 | 1,050 | n.a.   | 290 | 606 | 170 | 150 | 170 | 830 | n.a.   | 520 |
| FFM-10    | DN 100     | 4" | 273              | 250 | 1,100 | n.a.   | 100 | 820 | 250 | 250 | 250 | 870 | n.a.   | 560 |
| FFM-12    | DN 100     | 4" | 273              | 250 | 1,100 | n.a.   | 100 | 820 | 250 | 250 | 250 | 870 | n.a.   | 560 |
| FFM(I)-20 | DN 150     | 6" | 324              | 270 | 1,085 | 1,100  | 120 | 800 | 280 | 300 | 280 | 870 | 890    | 610 |
| FFM(I)-30 | DN 150     | 6" | 406              | 270 | 1,100 | 1,125  | 120 | 800 | 320 | 350 | 350 | 870 | 890    | 610 |
| FFM(I)-36 | DN 150     | 6" | 457              | 270 | 1,100 | 1,135  | 120 | 800 | 340 | 450 | 400 | 870 | 890    | 610 |
| FFM(I)-40 | DN 150     | 6" | 508              | 270 | 1,120 | 1,145  | 120 | 800 | 370 | 450 | 400 | 880 | 890    | 610 |

**FAUDI Aviation GmbH** Phone: +49 6428 4465-275  
 Scharnhorststrasse 7 B Fax: +49 6428 4465-231  
 D-35260 Stadtallendorf E-Mail: contact@faudi-aviation.com  
 Germany Web: www.faudi-aviation.com



# VFM Series

# FILTER MONITOR

## Applications

### Approved acc. to EI 1583 6<sup>th</sup> Edition

The FAUDI Aviation VFM-1 (Vertical Filter Monitor) housings for 10" and 14" Monitor elements are simple compact units, which can be easily installed and serviced.

The VFM-1-254-10 assembly can flow 149 l/min. maximum. The VFM-1-355-10 can flow 221 l/min. maximum.

**Installed Monitor elements are approved acc. to EI 1583 6<sup>th</sup> Edition.**



Installed monitor elements are not suitable for using with aviation fuels containing anti-icing additives (FSII)!

## Technical Details

| Filter Monitor Element Type              | Micron rating<br>µm | max. Flow Rates ( )<br>Kerosene (Jet-A1) |       | max. change-out<br>differential pressure |     |
|--|---------------------|--|-------|--|-----|
|  |                     | l/min                                    | USGPM | bar                                      | psi |
| <b>VFM-1-254-10</b><br>MO6.01C1-254-1/6B | 1                   | 149                                      | 39    | 1.5                                      | 22  |

| Filter Monitor Element Type              | Micron rating<br>µm | max. Flow Rates<br>Kerosene (Jet-A1) |       | max. change-out<br>differential pressure |     |
|--|---------------------|--------------------------------------|-------|--|-----|
|  |                     | l/min                                | USGPM | bar                                      | psi |
| <b>VFM-1-355-10</b><br>MO6.01C1-355-1/6B | 1                   | 221                                  | 58    | 1.5                                      | 22  |

- Design pressure: 10 bar
- Design temperature: -10 to +50°C

## Maintenance

- Cover with Quick-Opening for easy maintenance and inspection

## Other possible application

- Jet Fuel Dispensing Systems

|                        |         |                            |
|------------------------|---------|----------------------------|
| FAUDI Aviation GmbH    | Phone:  | +49 6428 4465-275          |
| Scharnhorststrasse 7 B | Fax:    | +49 6428 4465-231          |
| D-35260 Stadtallendorf | E-Mail: | contact@faudi-aviation.com |
| Germany                | Web:    | www.faudi-aviation.com     |

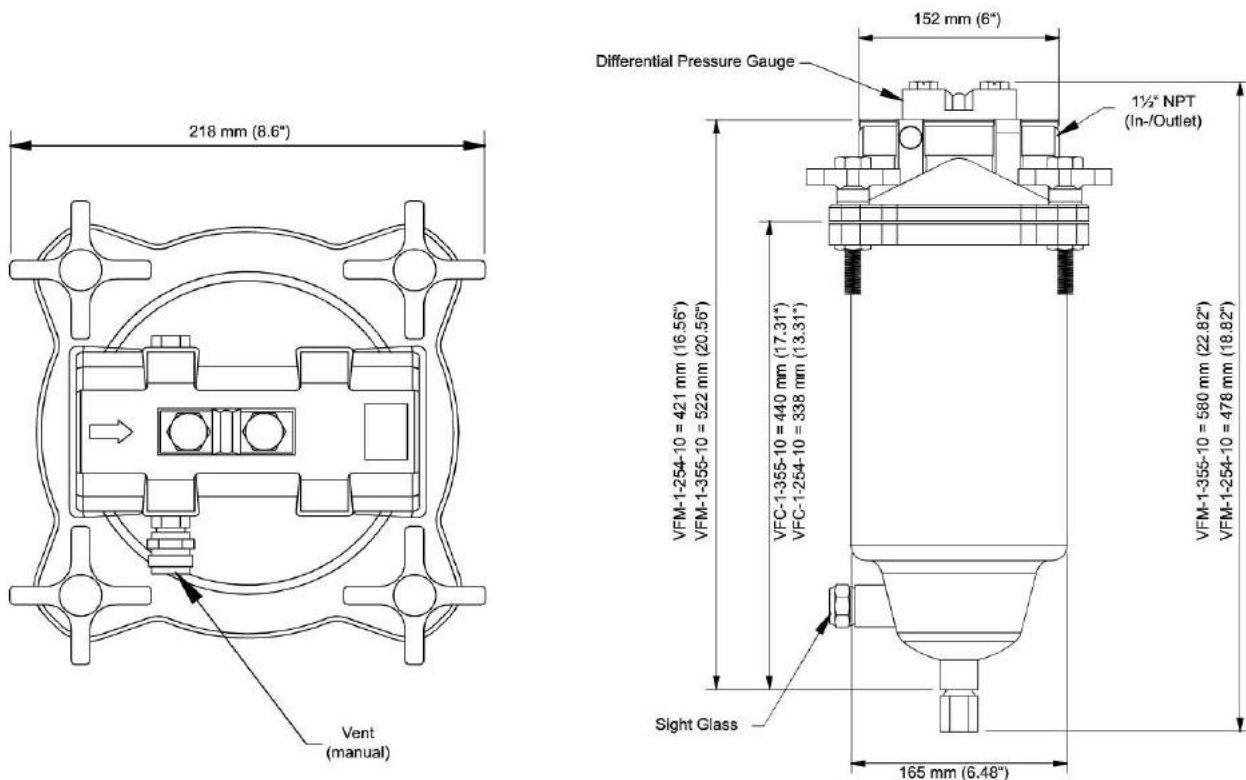


## VFM Series

### Standard Design

- Die-cast Aluminum Head
- Steel filter bowl housing
- Powder coated Components
- Cover with quick opening („Locking Ring Collar“ – no clamps)
- In-/Outlet 1 ½“ NPT
- 10 bar @ +50°C Maximum Design Pressure
- Manual Vent valve, Sight glass
- Manual Drain valve
- incl. 1 pce. Filter Monitor Element

### Dimensions in mm



minor dimension divergences reserved!

| Wear- and Spare Parts                                       | Wear part | Qty. | Article-No. |
|---|-----------|------|-------------|
| VFM-1-254-10  |           | 1    | 3 003 707   |
| VFM-1-355-10  |           | 1    | 3 003 710   |
| Differential Pressure Gauge (optional)                      |           | 1    | 3 002 531   |
| O-ring for Differential Pressure Gauge 20.5 x 3 (Viton®)    |           | 2    | 3 003 830   |
| O-ring for Differential Pressure Gauge 9.52 x 1.78 (Viton®) |           | 2    | 3 003 831   |
| Cover Seal 158x5.3 (BUNA-N)                                 | X         | 1    | 3 005 251   |
| Cover Seal 158x5.3 (VITON®)                                 | X         | 1    | 3 005 252   |
| Filter Monitor Element Type MO6.01C1-254-1/6B               | X         | 1    | 3 011 553   |
| Filter Monitor Element Type MO6.01C1-355-1/6B               | X         | 1    | 3 011 554   |

FAUDI Aviation GmbH Phone: +49 6428 4465-275  
 Scharnhorststrasse 7 B Fax: +49 6428 4465-231  
 D-35260 Stadtallendorf E-Mail: contact@faudi-aviation.com  
 Germany Web: www.faudi-aviation.com



# MPF Series

## Description

Cascadable Multi-Purpose-Filter-Housing to use with a coalescer-, separator-, microfilter- or filter monitor element. Realising a filter water separator for small flow rates with two MPF. One fitted with a coalescer element, the second with a separator elements. With three MPF it is possible to realize a filter water separator with a prefilter or with a downstream filter monitor. There are three different housing heights available to meet different flow rate requirements. For increasing the maximal flow rate over all the MPFs could be use in parallel condition. The connecting to the pipe system is possible by flanged connections or by optional available hose clamps. The MPF series offers various possibilities to create an economic filtration unit in lower flow rate ranges.



## Applications

- Airfield refuelling cars
- Stationary and mobile fuelling units on small airfields/airports
- Refuelling of small aircrafts
- Helicopter refuelling

## Fuels

- Kerosine (Jet Fuel)
- Military Jet Fuels
- AVGAS

## Technical Details

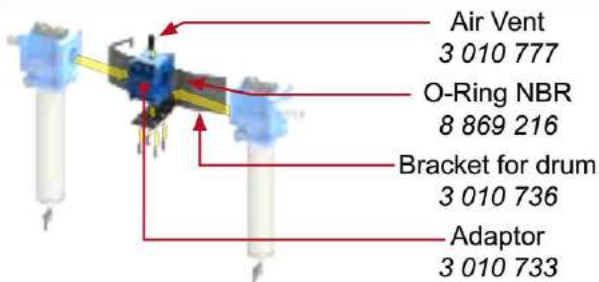
- Design Temperature: -10°C to +50°C
- Connections: R 1<sup>1/2</sup>" or flanged
- Design Pressure: 6,0 bar
- Max. Differential Pressure: 1,5 bar

## Flow Rates

| Vessel Type      | Element Length (inch) | Flow Rate                   | Element Type                   |      |                                  |      |      |                    |      |      |                              |      |      |
|------------------|-----------------------|-----------------------------|--------------------------------|------|----------------------------------|------|------|--------------------|------|------|------------------------------|------|------|
|                  |                       |                             | Coalescer Element (FDC-2xx-x)* |      | Micro Filter Element (FDF-2xx-x) |      |      |                    |      |      | Monitor Element (M.2-xxx/6B) |      |      |
|                  |                       |                             | nominal Micron Rating in µm    |      |                                  |      |      |                    |      |      |                              |      |      |
|                  |                       |                             | 1                              | 1    | 5                                | 10   | 15   | 20                 | 25   | 40   | 1                            | 5    | 25   |
| Commercial Fuels | Military Fuels        | Commercial & Military Fuels |                                |      |                                  |      |      | Comm. & Mil. Fuels |      |      |                              |      |      |
| MPF-210          | 10                    | l/min                       | 34                             | 22   | 39                               | 39   | 39   | 40                 | 40   | 40   | 39                           | 39   | 39   |
|                  |                       | usgpm                       | 9.0                            | 5.8  | 10.3                             | 10.3 | 10.3 | 10.6               | 10.6 | 10.6 | 10.3                         | 10.3 | 10.3 |
| MPF-215          | 15                    | l/min                       | 53                             | 34   | 58                               | 60   | 60   | 63                 | 63   | 63   | 58                           | 58   | 58   |
|                  |                       | usgpm                       | 14.0                           | 9.0  | 15.3                             | 15.9 | 15.9 | 16.6               | 16.6 | 16.6 | 15.3                         | 15.3 | 15.3 |
| MPF-230          | 30                    | l/min                       | 110                            | 70   | 115                              | 120  | 120  | 130                | 130  | 130  | 115                          | 115  | 115  |
|                  |                       | usgpm                       | 29.1                           | 18.5 | 30.4                             | 31.7 | 31.7 | 34.4               | 34.4 | 34.4 | 30.4                         | 30.4 | 30.4 |

\* only in combination with a separator element FDS-2xx with identical length!

## Available Accessories



Air Vent  
3 010 777

O-Ring NBR  
8 869 216

Bracket for drum  
3 010 736

Adaptor  
3 010 733



Y-Adaptor  
(für Parallel-Kombination)  
3 011 504

Reducer  
(R 1<sup>1/2</sup>" auf R 1")  
3 010 778

FAUDI Aviation GmbH  
Scharnhorststrasse 7 B  
D-35260 Stadtallendorf  
Germany

Phone: +49 6428 4465-275  
Fax: +49 6428 4465-231  
E-Mail: [contact@faudi-aviation.com](mailto:contact@faudi-aviation.com)  
Web: [www.faudi-aviation.com](http://www.faudi-aviation.com)

**FAUDI**  
aviation  
quality guarantees safety

## MPF Series

### Sample of marking

Articel Code: **MPF-215-A**

#### Vessel Series

Multi Purpose Filter

#### Fitted Element Type

|   |                      |            |
|---|----------------------|------------|
| C | Coalescer Element    | FDC-2xx-x  |
| S | Separator Element    | FDS-2xx-x  |
| A | Absorbtion Element   | M.2-xxx/6B |
| F | Micro Filter Element | FDF-2xx-x  |

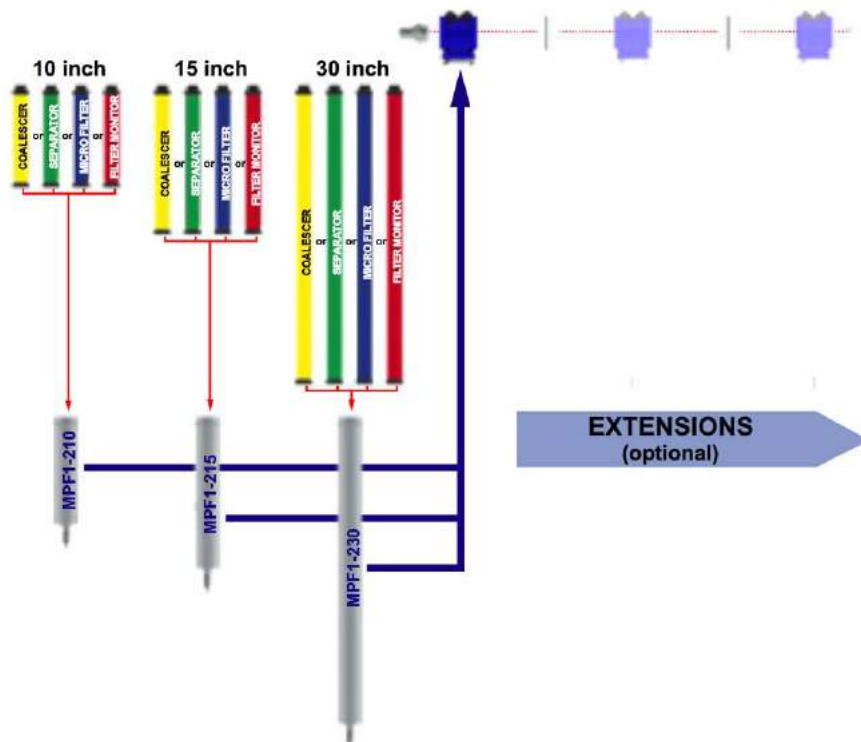
#### Outer Diameter (Element)

2" (50 mm)

#### Nomiale Length L<sub>N</sub> in inch (Element)

10 15 30

### Combinations of Elements



### Combinations of Housings (samples)

| Combinations | Coalescer | Separator | Micro Filter | Monitor Filter | Combinations | Micro Filter | Coalescer | Separator |
|--------------|-----------|-----------|--------------|----------------|--------------|--------------|-----------|-----------|
|              |           |           | 1            | 1              |              |              | 1         | 2         |
|              | 1         | 2         | 1            | 2              |              |              | 1         | 2         |
|              | 2         | 3         | 1            |                |              | 1            | 2         | 3         |
|              | 1         | 2         |              | 3              |              |              | 2         | 3         |
|              | 2         | 3         | 1            | 4              |              | 1            | 2         | 3         |
|              | 3         | 4         | 1 & 2        |                |              |              | 2         | 3         |

FAUDI Aviation GmbH  
Scharnhorststrasse 7 B  
D-35260 Stadtallendorf  
Germany

Phone: +49 6428 4465-275  
Fax: +49 6428 4465-231  
E-Mail: contact@faudi-aviation.com  
Web: www.faudi-aviation.com

**FAUDI**  
aviation  
quality guarantees safety

# C Series

## Applications

The main function of a clay filter is to remove unwanted surface active surfactants, colouring and other additives which may be present from the refining process or during transportation of Jet Fuel.

These unwanted surfactants can accumulate in the coalescer elements of a filter/water separator and reduce their water removal efficiency. Therefore such clay filter vessels are normally installed in front of a filter/water separator vessel.

To enable optimum performance of the adsorption process of the Attapul-gas Clay, the recommended flow rate per element is 25 l/min.



CLAY FILTER

## Construction (standard version)

Design pressure: 10 bar  
Design temperature: -10 to +50° C  
Design code: AD 2000 (German regulations for pressure vessels)  
Material of construction: Carbon steel  
Internal coating: acc. to MIL-C-4556 (latest Edition)  
Other design pressures as well as other materials like aluminium or stainless steel are available upon request.

## Accessories

For improved operation FAUDI Aviation Micro Filter may fitted with some or all of the following accessories:

- Automatic air eliminator
- Pressure relief valve
- Differential pressure gauge

## Concept & Performance

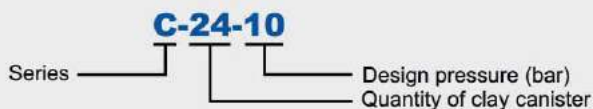
- Vertical mode
- Standard range - for optimum cost/performance ratio
- Quick delivery
- International standards
  - ▶ ASME Code, Section VIII with or without U-stamp
  - ▶ BS 5500
  - ▶ Stoomwezen
  - ▶ DNV, etc.

|                        |         |                            |
|------------------------|---------|----------------------------|
| FAUDI Aviation GmbH    | Phone:  | +49 6428 4465-275          |
| Scharnhorststrasse 7 B | Fax:    | +49 6428 4465-231          |
| D-35260 Stadtallendorf | E-Mail: | contact@faudi-aviation.com |
| Germany                | Web:    | www.faudi-aviation.com     |

**FAUDI**  
aviation  
quality guarantees safety

## C Series

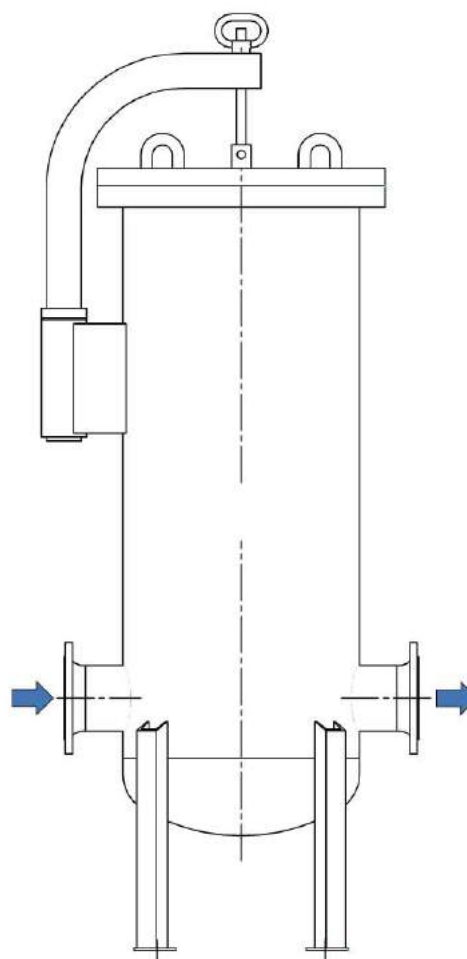
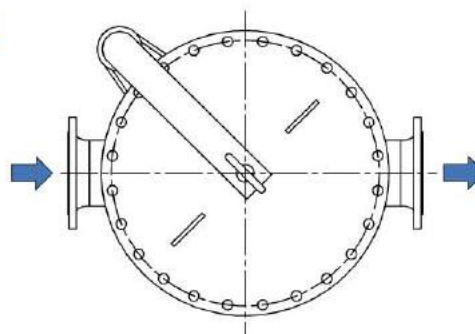
Sample of marking:



### Technical Details

- for stationary and mobile applications
- for Jet A1, JP 1, JP 4, JP 8, Kerosene
- maximale flow rates up to 3.300 l/min, higher flow rates on request

| Model No. | Element |  | Flow rates |       |
|-----------|---------|--|------------|-------|
|           | Qty.    |  | l/min      | USGPM |
| C- 9      | 9       |  | 225        | 59    |
| C- 12     | 12      |  | 300        | 79    |
| C- 18     | 18      |  | 450        | 119   |
| C- 21     | 21      |  | 525        | 139   |
| C- 24     | 24      |  | 600        | 159   |
| C- 33     | 33      |  | 825        | 218   |
| C- 39     | 39      |  | 975        | 258   |
| C- 51     | 51      |  | 1,275      | 337   |
| C- 63     | 63      |  | 1,575      | 416   |
| C- 87     | 87      |  | 2,175      | 575   |
| C-108     | 108     |  | 2,700      | 713   |
| C-132     | 132     |  | 3,300      | 872   |



FAUDI Aviation GmbH Phone: +49 6428 4465-275  
 Scharnhorststrasse 7 B Fax: +49 6428 4465-231  
 D-35260 Stadtallendorf E-Mail: contact@faudi-aviation.com  
 Germany Web: www.faudi-aviation.com





# Sieve Basket Strainer Series 11

## Product Description

The FAUDI Aviation Single Sieve basket strainer Type 11 is used for the filtration of fluids and gases. The Sieve basket strainer consists of a perforated sieve basket made of Carbon steel, Stainless Steel or other materials, depending on the fuels or gases being filtered.

## Installations

- The Sieve basket strainer can be installed as a suction or pressure filter
- Verticale or horizontal applications possible
- For both installations a shut-off valve must be fitted at the inlet/outlet connection and the drain point.

## Applications

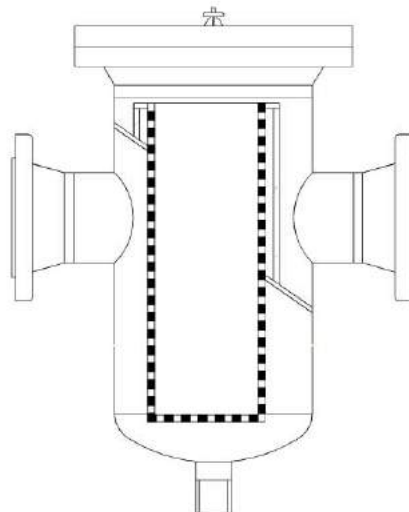
- As a strainer in pipework systems for the separation of unwanted contaminations (rust, dirt)
- Prefilter for oil and gas pipelines
- Protection Filter for meters, valves, pumps and safety devices

## Technical Details

- Change out differential pressure: 1 bar (higher in case of special designs)
- Operating temperature: -10 / +50 °C (depending on model type)
- Design pressure: depending on model type

## Standard Design

- Vertical or horizontal cylindrical housing with a dished bottom
- Depending on the size and pressure rating, Type 11 is fitted with a flat or dished cover
- Standard flange joint fastened with hexagonal bolts and nuts to secure the cover
- Alternative cover closures are possible (See page 2)



**SIEVE BASKET STRAINER**

|                        |         |                            |
|------------------------|---------|----------------------------|
| FAUDI Aviation GmbH    | Phone:  | +49 6428 4465-275          |
| Scharnhorststrasse 7 B | Fax:    | +49 6428 4465-231          |
| D-35260 Stadtallendorf | E-Mail: | contact@faudi-aviation.com |
| Germany                | Web:    | www.faudi-aviation.com     |

**FAUDI**  
aviation  
quality guarantees safety

## Sieve Basket Strainer Series 11

### Sample of Identification

| Model No. | Connections DN | Filter-area (cm <sup>2</sup> ) |
|-----------|----------------|--------------------------------|
| 11.10     | 40             | 300                            |
| 11.13     | 65             | 640                            |
| 11.19     | 100            | 1.250                          |
| 11.27     | 150            | 3.200                          |
| 11.36     | 200            | 4.800                          |
| 11.45     | 250            | 5.800                          |
| 11.55     | 300            | 10.000                         |
| 11.60     | 350            | 14.000                         |
| 11.70     | 400            | 18.000                         |
| 11.85     | 500            | 26.500                         |
| 11.00     | 600            | 33.500                         |
| 11.01     | 700            | 37.500                         |

| Cover Closure |   | Material |                       | Pressure Range (bar) |       | Connections DN |     | Insert |                   | Mesh |                   |
|---------------|---|----------|-----------------------|----------------------|-------|----------------|-----|--------|-------------------|------|-------------------|
| 1             | Standard                                      | 0        | Carbon steel          | 0                    | 6     | 02             | 20  | 1      | 1.4541            | 0    | Without           |
| 3             | Eye swing bolts                               | 1        | 1.4541                | 1                    | 10    | 03             | 32  | 2      | 1.4571            | 1    | 1.4541            |
| 4             | Segmental bolt closure                        | 2        | 1.4571                | 2                    | 16    | 04             | 40  | 3      | Monel             | 2    | 1.4571            |
| 7             | Patent quick opening closure with cover davit | 3        | Carbon steel (coated) | 3                    | 25    | 05             | 50  | 4      | Special materials | 3    | Monel             |
|               |   | 6        | Special materials     | 4                    | 40    | 06             | 65  |        |                   | 4    | Special materials |
|               |   |          |                       | 5                    | 64    | 08             | 80  |        |                   |      |                   |
|               |   |          |                       | 6                    | 100** | 10             | 100 |        |                   |      |                   |
|               |   |          |                       | 7                    | 160** | 12             | 125 |        |                   |      |                   |
|               |   |          |                       |                      |       | 15             | 150 |        |                   |      |                   |
|               |   |          |                       |                      |       | 20             | 200 |        |                   |      |                   |
|               |   |          |                       |                      |       | 25             | 250 |        |                   |      |                   |
|               |   |          |                       |                      |       | 30             | 300 |        |                   |      |                   |
|               |   |          |                       |                      |       | 35             | 350 |        |                   |      |                   |
|               |   |          |                       |                      |       | 40             | 400 |        |                   |      |                   |
|               |   |          |                       |                      |       | 50             | 500 |        |                   |      |                   |
| 11.13         | 1.  | 0        |                       | 1.                   |       | 05             |     | 1      |                   | 1    |                   |

**Sample of Article Code = Model 11.131.01.0511**

FAUDI Aviation GmbH Phone: +49 6428 4465-275  
 Scharnhorststrasse 7 B Fax: +49 6428 4465-231  
 D-35260 Stadtallendorf E-Mail: contact@faudi-aviation.com  
 Germany Web: www.faudi-aviation.com



# Sieve Basket Strainer Series 21

## Product Description

The FAUDI Aviation Single Sieve basket strainer Type 21 is used for the filtration of fluids and gases. The Sieve basket strainer consists of a perforated sieve basket made of Carbon steel, Stainless Steel or other materials, depending on the fuels or gases being filtered

## Installations

- The Sieve basket strainer can be installed as a suction or pressure filter
- Vertical or horizontal applications possible
- For both installations a shut-off valve must be fitted at the inlet/outlet connection and the drain point

## Applications

- As a strainer in pipework systems for the separation of unwanted contaminations (rust, dirt)
- Prefilter for oil and gas pipelines
- Protection Filter for meters, valves, pumps and safety devices

## Technical Details

- Change out on a differential pressure of 1 bar (higher in case of special designs)
- Operating temperature: -10C / +50°C (depending on model type)
- Design pressure: depending on model type

## Standard Design

- Vertical or horizontal cylindrical housing with a dished bottom
- Depending on the size and pressure rating, Type 11 is fitted with a flat or dished cover
- flange joint on housing opening (cover)

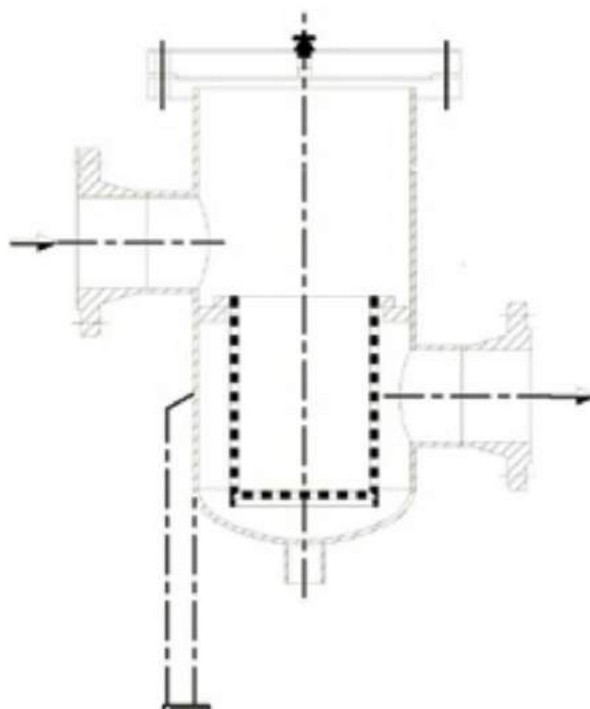
# SIEVE BASKET STRAINER

|                        |         |                            |
|------------------------|---------|----------------------------|
| FAUDI Aviation GmbH    | Phone:  | +49 6428 4465-275          |
| Scharnhorststrasse 7 B | Fax:    | +49 6428 4465-231          |
| D-35260 Stadtallendorf | E-Mail: | contact@faudi-aviation.com |
| Germany                | Web:    | www.faudi-aviation.com     |

**FAUDI**  
aviation  
quality guarantees safety

## Sieve Basket Strainer Series 21

### Sample of Identification



| Model No. | Connections DN | Filter-area (m <sup>2</sup> ) |
|-----------|----------------|-------------------------------|
| 21.08     | 40             | 0,04                          |
| 21.10     | 50             | 0,07                          |
| 21.13     | 80             | 0,14                          |
| 21.19     | 100            | 0,22                          |
| 21.27     | 150            | 0,48                          |
| 21.36     | 200            | 0,80                          |
| 21.45     | 250            | 1,20                          |
| 21.55     | 300            | 1,60                          |

|       | Cover Closure |   | Material |                       | Press. Range bar |       | Connections DN |     | Insert |                   | Mesh |                   |
|-------|---------------|---|----------|-----------------------|------------------|-------|----------------|-----|--------|-------------------|------|-------------------|
|       |               |   |          |                       |                  |       |                |     |        |                   |      |                   |
|       | 1             | Standard                                      | 0        | Carbon steel          | 0                | 6     | 02             | 20  | 1      | 1.4541            | 0    | Without           |
|       | 3             | Eye swing bolts                               | 1        | 1.4541                | 1                | 10    | 03             | 32  | 2      | 1.4571            | 1    | 1.4541            |
|       | 4             | Segmental bolt closure                        | 2        | 1.4571                | 2                | 16    | 04             | 40  | 3      | Monel             | 2    | 1.4571            |
|       | 7             | Patent quick opening closure with cover davit | 3        | Carbon steel (coated) | 3                | 25    | 05             | 50  | 4      | Special materials | 3    | Monel             |
|       |               |   | 6        | Special materials     | 4                | 40    | 06             | 65  |        |                   | 4    | Special materials |
|       |               |   |          |                       | 5                | 64    | 08             | 80  |        |                   |      |                   |
|       |               |   |          |                       | 6                | 100** | 10             | 100 |        |                   |      |                   |
|       |               |   |          |                       | 7                | 160** | 12             | 125 |        |                   |      |                   |
|       |               |   |          |                       |                  |       | 15             | 150 |        |                   |      |                   |
|       |               |   |          |                       |                  |       | 20             | 200 |        |                   |      |                   |
|       |               |   |          |                       |                  |       | 25             | 250 |        |                   |      |                   |
|       |               |   |          |                       |                  |       | 30             | 300 |        |                   |      |                   |
| 21.13 | 1.            |   | 0        |                       | 1.               |       | 05             |     | 1      |                   | 1    |                   |

**Sample of Article Code = Model 21.131.01.0511**

FAUDI Aviation GmbH  
 Scharnhorststrasse 7 B  
 D-35260 Stadtallendorf  
 Germany

Phone: +49 6428 4465-275  
 Fax: +49 6428 4465-231  
 E-Mail: [contact@faudi-aviation.com](mailto:contact@faudi-aviation.com)  
 Web: [www.faudi-aviation.com](http://www.faudi-aviation.com)

